

TM 11-6625-540-40P

---

**TECHNICAL MANUAL**

**GENERAL SUPPORT MAINTENANCE REPAIR PARTS  
AND SPECIAL TOOLS LISTS (INCLUDING DEPOT  
MAINTENANCE REPAIR PARTS AND SPECIAL TOOLS)**

**OSCILLOSCOPE AN/USM-32**

**(FSN 6625-519-1954)**

---

**HEADQUARTERS, DEPARTMENT OF THE ARMY**  
**JANUARY 1975**

TECHNICAL MANUAL }  
No. 11-6625-540-40P }

HEADQUARTERS  
DEPARTMENT OF THE ARMY  
WASHINGTON, D.C. 31 January 1975

**General Support Maintenance Repair Parts and  
Special Tools Lists (Including Depot Maintenance  
Repair Parts and Special Tools)**

**OSCILLOSCOPE AN/USM-32  
(FSN 6625-519-1954)**

*Current as of 20 November 1974*

	Paragraph	Page
SECTION I. INTRODUCTION		
Scope	1-1	2
General	1-2	2
Explanation of columns	1-3	2
Special information	1-4	4
Location of repair parts	1-5	4
Abbreviations (Not applicable)	1-6	5
Reporting of equipment publication improvements	1-7	5
II. REPAIR PARTS LIST		6
III. SPECIAL TOOLS, TEST AND SUPPORT EQUIPMENT (Not applicable)		
IV. INDEX—FEDERAL STOCK NUMBER AND REFERENCE NUMBER CROSS-REFERENCE TO FIGURE AND ITEM NUMBER		31

\*This manual, together with TM 11-6625-540-20P, 31 January 1975, supersedes DD Form AN/USM-32, 21 April 1968, including all changes.

SECTION I.

INTRODUCTION

1-1. Scope

This manual lists repair parts and special tools required for the performance of general support and depot maintenance of the AN/USM-32. The PCCN for the AN/USM-32 is GTEACG for all models.

NOTE

No parts authorized for stockage at direct support.

1-2. General

**This repair parts** and special tools list is divided into the following sections:

a. Repair Parts List-Section II. A list of repair parts authorized for the Performance of maintenance at the general support and depot level. This repair parts list is arranged in alphabetical order.

b. Special Tools, Test and Support Equipment-Section III. Not applicable.

c. Index--Federal Stock Number and Reference Number Cross-Reference to Figure and **Item Number—Section IV. A list, in ascending numerical sequence, of all Federal stock numbers appearing in the listings, followed by a list, in alphanumeric sequence, of all reference numbers appearing in the listings. Federal stock number and reference numbers are cross-referenced to each illustration figure figure and item number or reference designation appearance.**

1-3. Explanation of columns

The following provides an explanation of columns found in the tabular list.

a. *Source, Maintenance, and Recoverability Codes (SMR).*

(1) *Source code.* Indicates the manner of acquiring support items for maintenance, repair, or overhaul of end items. Source codes are:

<i>Code</i>	<i>Explanation</i>
PA	Item procured and stocked for anticipated or known usage.

<i>Code</i>	<i>Explanation</i>
PB	Item procured and stocked for insurance purposes because essentiality dictates that a minimum quantity be available in the supply systems.
PC	Item procured and stocked and which otherwise would be coded PA except that it is deteriorative in nature.
PD	Support item, excluding support equipment, procured for initial issue or outfitting and stocked only for subsequent or additional initial issues or outfittings. Not subject to automatic replenishment.
PE	Support equipment procured and stocked for initial issue or outfitting to specified maintenance repair activities.
PF	Support equipment which will not be stocked but which will be centrally procured on demand.
PG	Item procured and stocked to provide for sustained support for the life of the equipment. It is applied to an item peculiar to the equipment which because of probable discontinuance or shutdown of production facilities would prove uneconomical to reproduce at a later time.
KD	An item of depot overhaul/repair kit and not purchased separately. Depot kit defined as a kit that provides items required at the time of overhaul or repair.
KF	An item of a maintenance kit and not purchased separately. Maintenance kit defined as a kit that provides an item that can be replaced at organizational or direct support or general support levels of maintenance.
KB	Item included in both a depot overhaul/repair kit and a maintenance kit.
MO	Item to be manufactured or fabricated at organizational level.
MF	Item to be manufactured or fabricated at direct support maintenance level.

<i>Code</i>	<i>Explanation</i>
MH--	Item to be manufactured or fabricated at general support maintenance level.
MD--	Item to be manufactured or fabricated at depot maintenance level.
AO--	Item to be assembled at organizational level.
AF--	Item to be assembled at direct support maintenance level.
AH--	Item to be assembled at general support maintenance level.
AH--	Item to be assembled at depot maintenance level.
XA--	Item is not procured or stocked because the requirements for the item will result in the replacement of the next higher assembly.
XB--	Item is not procured or stocked. If not available through salvage, requisition.
XC--	Installation drawing, diagram instruction sheet, field service drawing, that is identified by manufacturers' part number.
XD--	Support items can be requisitioned with justification.

**NOTE**

Cannibalization or salvage may be used as a source of supply for any items source coded above except those coded X A and aircraft support items as restricted by AR 700-42.

**(2) Maintenance code.** Maintenance codes are assigned to indicate the levels of maintenance authorized to USE and REPAIR support items. The maintenance codes are entered in the third and fourth positions of the Uniform SMR Code Format as follows:

**(a) Use (third position).** The maintenance code entered in the third position indicates the lowest maintenance level authorized to remove, replace, and use the support item. The maintenance code entered in the third position indicates one of the following levels of maintenance.

<i>Code</i>	<i>Application/Explanation</i>
<b>O</b> --	Support item is removed, replaced, used at the organizational level of maintenance.

**NOTE**

A code "C" may be used in this position to denote crew or operator maintenance performed within organizational maintenance.

<b>F</b> --	Support item is removed, replaced, used at the direct support maintenance level.
-------------	--

<i>Code</i>	<i>Application/Explanation</i>
H--	Suoport item is removed, replaced, used at the general support maintenance.
D--	Support items that are removed, replaced, used at depot only. (b) Repair (fourth position). The maintenance code entered in the fourth position indicates whether the item is to be repaired and identifies the lowest maintenance level with the capability to perform complete repair (i.e., all authorized maintenance functions). <b>When a maintenance code is not used a dash (-) sign is entered.</b> For multiservice equipment/ <b>systems or</b> when a code is entered, this position will contain one of the following maintenance codes as assigned by the service(s) that require the code:

<i>Code</i>	<i>Application/Explanation</i>
<b>O</b> --	The lowest maintenance level capable of complete repair of the support item is the organizational level.
<b>F</b> --	The lowest maintenance level capable of complete repair of the support item is direct support.
<b>H</b> --	<b>The lowest maintenance level capable of complete repair of the support item is general support.</b>
<b>D</b> --	<b>The lowest maintenance level capable of complete repair of the support item is the depot level.</b>
<b>L</b> --	<b>Repair restricted to designated Specialized Repair Activity.</b>
<b>Z</b> --	<b>Nonrepairable. No repair is authorized.</b>
<b>B</b> --	<b>No repair is authorized. The item may be reconditioned by adjusting, lubricating, etc., at the user level. No parts or special tools are procured for the maintenance of this item.</b>

**(3) Recoverability code.** Recoverability codes are assigned to support items to indicate the disposition action on unserviceable items. The recoverability code is entered in the fifth position of the uniform SMR Code Format as follows:

<i>Code</i>	<i>Explanation</i>
<b>Z</b> --	Nonrepairable item. When unserviceable, condemn and dispose at the level indicated in the first digit of the maintenance code.
<b>O</b> --	Repairable item. When uneconomically repairable, condemn and dispose at organizational level.
<b>F</b> --	Repairable item. When uneconomically repairable, condemn and dispose at the direct support level.

<b>Code</b>	<b>Explanation</b>
H--	Repairable item. When uneconomically repairable, condemn and dispose at the general support level.
D--	Repairable item. When beyond lower level repair capability, return to depot. Condemnation and disposal not authorized below depot level.
L-	Repairable item. Repair, condemnation, and disposal not authorized below depot/Specialized Repair Activity level.
A--	Item requires special handling or condemnation procedures because of specific reasons (i.e., precious metal content, high dollar value, critical material or hazardous material).

b. Federal Stock Number. Indicates the Federal stock number assigned to the item.

**NOTE**

For requisitioning purposes, the Federal stock number must be converted to the National stock number by adding "-00-" after the Federal stock classification (FSC) code (first four digits). For example, FSN 6625-553-0142 converts to NSN 6625-00-553-0142.

c. Description. Indicated the Federal Item name and a minimum description required to identify the item. The last line indicates the reference number followed by the applicable Federal Supply Code for Manufacturer (FSCM) in parentheses. **The FSCM is used as an element in item identification to designate manufacturer or distributor or Government agency, etc., and is identified in SB 708-42.**

d. *Unit of Measure (U/M)*. Indicates the standard or basic quantity by which the listed item is used in performing the actual maintenance function. This measure is expressed by a two-character alphabetical abbreviation; e.g., ea, in, pr, etc., and is the basis used to indicate quantities and allowances in subsequent columns. **When the unit of measure differs from the unit of issue, the lowest unit of issue that will satisfy the required units of measure will be requisitioned.**

e. *Quantity Incorporated in Unit*. This column indicates the quantity of the item used in the equipment. Subsequent appearances of the same item in the same assembly are indicated by the letters "REF".

f. *30-Day DS/GS Maintenance Allowances*.

**NOTE**

Allowances in **GS** column are for **GS** maintenance only.

(1) The repair parts indicated by asterisk entries in separate allowance columns for **GS** represent those authorized for use at that category of maintenance to be requisitioned on an "as required" basis, until stockage is based on demand in accordance with AR 710-2.

(2) Allowance quantities are indicated in the special tool lists section for special tools, **TMDE**, and other support equipment.

g. *1-Year Allowances Per 100 Equipments/Contingency Planning Purposes*. Column intentionally left blank.

h. Depot Maintenance Allowance Per 100 Equipments. This column indicates opposite the first appearance of each item the total quantity authorized for depot maintenance of 100 equipments.

i. Illustration. This column is divided as follows:

(1) Figure number. Indicates the figure number of the illustration on which the item is shown in TM 11-5123.

(2) Item number. Indicates the item number or reference designation used to reference the item in the illustration.

1-4. Special Information

a. Usable on codes are included in column 3. Uncoded items are applicable to all models. Identification of the usable on codes used in this publication are:

<b>Code</b>	<b>Used on</b>
<b>AM8</b>	<b>AN/USM-32</b>

b. The following publication pertains to the AN/USM-32 and its components:

<b>TM 11-5123</b>	<b>Oscilloscope AN/USM-32</b>
<b>TM11-6625-540-20P</b>	<b>Organizational Maintenance Repair Parts and Special Tools</b>
<b>TM 11-1167-35</b>	<b>Lists: Oscilloscope AN/USM-32.</b>

1-5. Location of Repair Parts

a. This manual contains one cross-reference index (sec IV) to be used to locate a repair part when either the Federal stock number or reference number (manufacturer's part number) is known. The first column in the index is prepared in numerical or alphanumeric sequence in ascending order. The reference numbers (manufacturer's part numbers) are listed im-

mediately following the last listed Federal stock number in the index of Federal stock numbers.

b. When the Federal stock number or reference number is known, follow the procedures given in (1) and (2) below.

(1) Refer to the index of Federal stock numbers (set IV) and locate the Federal stock number or reference number. The FSN and reference number are cross-referenced to the applicable figure and item number or reference designation.

(2) Refer to the repair parts list (sec II and locate the figure number (col 10a) and item number or reference designation (col 10b) as noted in the FSN index.

c. When the figure and item number or reference designation are known, scrutinize columns 10a and 10b of the repair parts list (set II) until the item is located.

d. When the FSN, reference number, figure number, item number and reference designation are not known, scrutinize column 3 of the repair parts list (sec II), which is arranged in alphabetical order.

1-6. Abbreviations

Not applicable

1-7. Reporting of Equipment Publication Improvements

The reporting of errors, omissions, and recommendations for improving this publication by the individual user is encouraged. Reports should be submitted on DA Form 2028 (Recommended Changes to Publications and Blank Forms) and forwarded direct to Commander, US Army Electronics Command, ATTN: AMSEL-MA-DM Fort Monmouth, N.J. 07703.

(Next printed page is 6)

## SECTION II

TM 11-6625-540-40P

(1) SMR CODE	(2) FEDERAL STOCK NUMBER	(3) DESCRIPTION REFERENCE NUMBER & MFR CODE USABLE ON CODE	(4) UNIT OF MEAS	(5) QTY INC IN UNIT	(6) 30-DAY DS MAINT ALLOWANCE			(7) 30-DAY GS MAINT ALLOWANCE			(8) 1-YR ALW PER 100 EQUIP CNTGCV	(9) DEPOT MAINT ALW PER 100 EQUIP	(10) ILLUSTRATION	
					(a)	(b)	(c)	(a)	(b)	(c)			(a)	(b)
					1-20	21-50	51-100	1-20	21-50	51-100			FIGURE NO	ITEM NO
PAHZZ	6145-284-0579	CABLE POWER ELECTRICAL: NO-REF-DFSIG PER SPEC MIL-C-332; 10 FT LONG; C003MGF3-18-0330 (81349)	EA	1				*	*	*		10		
PAHZZ	6145-161-0913	CABLE RADIO FREQUENCY: NO-REF-DESIG 10.. FT LONG RG62AU (80058)	EA	1				*	*	*		10		
PAHZZ	5910-643-8966	CAPACITOR, FIXED, MICA DIELECTRIC: C503.... (SEE FIG 7-128) 2.2 MMF PORM20%; 500 VDCW; 12018778 (81355)	EA	2				*	*	*		3		C503
PAHZZ	5910-643-8966	CAPACITOR, FIXED, MICA DIELECTRIC: C510... 2.2 MMF PORM20%; 500 VDCW; (SEE FIG 7-128) 12018778 (81355)	EA	REF				*	*	*				C510
PAHZZ	5910-543-0833	CAPACITOR, FIXED, CERAMIC DIELECTRIC: C702. 3 TO 12 MMF 500 VDCW; CU11A120 (81350)	EA	1				*	*	*		3	7-19	C702
PAHZZ	5910-938-1013	CAPACITOR, FIXED, MICA DIELECTRIC: C106 5. MMF PORM2%; 300 VDCW; CM158050M (81350)	EA	2				*	*	*		3	7-19	C106
PAHZZ	5910-938-1013	CAPACITOR, FIXED, MICA DIELECTRIC: C701.. 5 MMF PORM2%; 300 VDCW; CM158050M (81350)	EA	REF				*	*	*			7-19	C701
PAHZZ	5910-702-3768	CAPACITOR, FIXED, CERAMIC DIELECTRIC: C521. 7 MMF PORM0.25%; 500 VDCW; CC20CH070C (81350)	EA	1				*	*	*		3	7-19	C521
KRZZ		CAPACITOR, FIXED, MICA DIELECTRIC: C113 10 MMF PORM5%; 500 VDCW; RCM32100J (80058)	EA	2				*	*	*			7-11	C113
KRZZ		CAPACITOR, FIXED, MICA DIELECTRIC: C520.. 10 MMF PORM5%; 500 VDCW; (See Figure 7-128) RCM32100J (80058)	EA	REF				*	*	*				C520
KRZZ		CAPACITOR, FIXED, MICA DIELECTRIC: C507.... (SEE FIG. 7-128) 10 MMF PORM10%; 500 VDCW; CM208100K (81350)	EA	1				*	*	*				C507
PAHZZ	5910-850-9066	CAPACITOR, FIXED, MICA DIELECTRIC: C506 15 MMF PORM10%; 500 VDCW; (See Figure 7-128) REC115A (80058)	EA	1				*	*	*		3		C506
PAHZZ	5910-666-7941	CAPACITOR, FIXED, MICA DIELECTRIC: C114 13 MMF PORM3%; 500 VDCW; 136 (60572)	EA	1				*	*	*		3	7-11	C114
KRZZ		CAPACITOR, FIXED, MICA DIELECTRIC: C713.... (SEE FIG. 7-128) 15 MMF PORM10%; 500 VDCW; CM208150K (80058)	EA	1				*	*	*				C713
KRZZ		CAPACITOR, FIXED, MICA DIELECTRIC: C112 15 MMF PORM3%; 500 VDCW; 136 (60572)	EA	1				*	*	*			7-11	C112
PAHZZ	5910-667-5560	CAPACITOR, FIXED, MICA DIELECTRIC: C107 20 MMF PORM2% 500 VDCW; 136 (60572)	EA	1				*	*	*		3	7-11	C107
PAHZZ	5910-854-6853	CAPACITOR, FIXED, ELECTROLYTIC: C802 2.... CONTINUED	EA	1				*	*	*		3	7-98	C802

## SECTION II

TM 11-6625-540-40P

(1) SMR CODE	(2) FEDERAL STOCK NUMBER	(3) DESCRIPTION REFERENCE NUMBER & MFR CODE USABLE ON CODE	(4) UNIT OF MEAS	(5) QTY INC IN UNIT	(6) 30-DAY DS MAINT ALLOWANCE			(7) 30-DAY GS MAINT ALLOWANCE			(8) 1-YR ALW PER 100 EQUIP CNTGCT	(9) DEPOT MAINT ALW PER 100 EQUIP	(10) ILLUSTRATION	
					(a)	(b)	(c)	(a)	(b)	(c)			(a)	(b)
					1-20	21-50	51-100	1-20	21-50	51-100			FIGURE NO	ITEM NO
		CONTINUED												
PAMZZ	5910-276-6815	SECT 35 MMF 400 VDCW; CE42C350Q (81350) CAPACITOR, FIXED, MICA DIELECTRIC: C902 47 MMF FORM10%; 500 VDCW; REC115 (80058)	EA	1				*	*	*		3	7-25	C902
PAMZZ	5910-850-0540	CAPACITOR, FIXED, MICA DIELECTRIC: C122 51 MMF FORM5%; 300 VDCW; CM15C510J (81350)	EA	3				*	*	*		3	7-98	C122
PAMZZ	5910-850-0540	CAPACITOR, FIXED, MICA DIELECTRIC: C204.. 51 MMF FORM5%; 300 VDCW; CM15C510J (81350)	EA	REF				*	*	*			7-16	C204
PAMZZ	5910-850-0540	CAPACITOR, FIXED, MICA DIELECTRIC: C206.. 51 MMF FORM5%; 300 VDCW; CM15C510J (81350)	EA	REF				*	*	*		*	7-16	C206
XDHZZ		CM1510J (81350) CAPACITOR, FIXED, MICA DIELECTRIC: C512 56 MMF FORM10%; 500 VDCW; CM20C560K (81350)	EA	1				*	*	*			7-19	C512
XDHZZ		CAPACITOR, FIXED, MICA DIELECTRIC: C108 82 MMF FORM5%; 300 VDCW; CM15C820J (81350)	EA	2				*	*	*			7-11	C108
XDHZZ		CAPACITOR, FIXED, MICA DIELECTRIC: C123.. 82 MMF FORM5%; 300 VDCW; CM15C820J (81350)	EA	REF				*	*	*			7-98	C123
PAMZZ		CAPACITOR, FIXED, MICA DIELECTRIC: C705.... 100 MMF FORM1%; 500 VDCW; 605 (80058)	EA	1				*	*	*			7-18	C705
XDHZZ		CAPACITOR, FIXED, MICA DIELECTRIC: C109.... 240 MMF FORM5%; 300 VDCW; CM15C241J (81350)	EA	1				*	*	*			7-11	C109
PAMZZ	5910-899-2538	CAPACITOR, FIXED, MICA DIELECTRIC: C711.... (SEE FIG. 7-12B) 270 MMF FORM10%; 500 VDCW; CM20B271K (81350)	EA	1				*	*	*		3		C711
XDHZZ		CAPACITOR, FIXED, MICA DIELECTRIC: C110.... 430 MMF FORM5%; 300 VDCW; CM15B431J (81350)	EA	1				*	*	*			7-11	C110
PAMZZ	5910-918-1652	CAPACITOR, FIXED, MICA DIELECTRIC: C707.... 470 MMF FORM1%; 300 VDCW; 605 (80058)	EA	1				*	*	*		3	7-18	C707
XDHZZ		CAPACITOR, FIXED, MICA DIELECTRIC: C901.... 560 MMF FORM20%; 500 VDCW; M36 (53021)	EA	1				*	*	*			7-25	C901
XDHZZ		CAPACITOR, FIXED, MICA DIELECTRIC: C303.... 820 MMF FORM5%; 300 VDCW; CM20C821J (81350)	EA	2				*	*	*			7-19	C303
XDHZZ		CAPACITOR, FIXED, MICA DIELECTRIC: C513.... 820 MMF FORM5%; 300 VDCW; CM20C821J (81350)	EA	REF				*	*	*			7-19	C513
PAMZZ	5910-762-2945	CAPACITOR, FIXED, MICA DIELECTRIC: C505.... (SEE FIG. 7-12B) 470 MMF FORM5%; 300 VDCW; CM15B471J (81350)	EA	1				*	*	*		3		C505



## SECTION II

TM 11-6625-540-40P

(1) SMR CODE	(2) FEDERAL STOCK NUMBER	(3) DESCRIPTION REFERENCE NUMBER & MFR. CODE    USABLR ON CODE	(4) UNIT OF MEAS	(5) QTY INC IN UNIT	(6) 30-DAY DS MAINT ALLOWANCE			(7) 30-DAY GS MAINT ALLOWANCE			(8) 1-YR ALW PER 100 EQUIP CHNGCY	(9) DEPOT MAINT ALW PER 100 EQUIP	(10) ILLUSTRATION	
					(a)	(b)	(c)	(a)	(b)	(c)			(a)	(b)
					1-20	21-50	51-100	1-20	21-50	51-100			FIGURE NO	ITEM NO
XHZZ		CAPACITOR, FIXED, CERAMIC DIELECTRIC: C903. 3000 MMF 600 VDCW; 03137701 (92294)	EA	1				*	*	*			7-23	C903
XHZZ		CAPACITOR, FIXED, PAPER DIELECTRIC: C115... 47,000 MMF PORN200; 400 VDCW; 86-86P47304S1 (80058)	EA	4				*	*	*			7-98	C115
XHZZ		CAPACITOR, FIXED, PAPER DIELECTRIC: C120... 47,000 MMF PORN200; 600 VDCW; 86-86P47306S1 (80058)	EA	REF				*	*	*			7-98	C120
XHZZ		CAPACITOR, FIXED, PAPER DIELECTRIC: C302... 47,000 MMF PORN200; 600 VDCW; 86-86P47306S1 (80058)	EA	REF				*	*	*			7-19	C302
XHZZ		CAPACITOR, FIXED, PAPER DIELECTRIC: C501... 47,000 MMF PORN200; 600 VDCW; 86-86P47306S1 (80058)	EA	REF				*	*	*			7-19	C501
PAHZZ	5910-820-5352	CAPACITOR, FIXED, PAPER DIELECTRIC: C301... 68,000 MMF PORN100; 200 VDCW; CP04A3KC603K (81350)	EA	1				*	*	*		3	7-98	C301
PAHZZ	5910-617-4114	CAPACITOR, FIXED, PAPER DIELECTRIC: C602... 8200 MMF PORN 100; 600 VDCW; 186P82296S1 (22222)	EA	1				*	*	*		3	7-98	C602
XHZZ		CAPACITOR, FIXED, PAPER DIELECTRIC: C514... 8200 MMF PORN100; 100 VDCW; 2915156289 (84P82)	EA	1				*	*	*			7-19	C514
PAHZZ	5910-851-9258	CAPACITOR, FIXED, PAPER DIELECTRIC: C515... 82,000 MMF PORN100; 100 VDCW; 86P82391S1 (80058)	EA	1				*	*	*		3	7-19	C515
PAHZZ	5910-681-9189	CAPACITOR, FIXED, PAPER DIELECTRIC: C402... 100,000 MMF PORN200; 200 VDCW; P123ZNGP (80058)	EA	5				*	*	*		3	7-98	C402
PAHZZ	5910-681-9189	CAPACITOR, FIXED, PAPER DIELECTRIC: C502... 100,000 MMF PORN200; 200 VDCW; P123ZNGP (80058) (See Figure 7-12B)	EA	REF				*	*	*				C502
PAHZZ	5910-681-9189	CAPACITOR, FIXED, PAPER DIELECTRIC: C504... 100,000 MMF PORN200; 200 VDCW; P123ZNGP (80058) (See Figure 7-12B)	EA	REF				*	*	*				C504
PAHZZ	5910-681-9189	CAPACITOR, FIXED, PAPER DIELECTRIC: C518... 100,000 MMF PORN200; 200 VDCW; P13ZNGP (80058) (See Figure 7-12B)	EA	REF				*	*	*		*		C518
PAHZZ	5910-681-9189	CAPACITOR, FIXED, PAPER DIELECTRIC: C714... 100,000 MMF PORN200; 200 VDCW; P123ZNGP (80058) (See Figure 7-12B)	EA	REF				*	*	*				C714
XHZZ		CAPACITOR, FIXED, PAPER DIELECTRIC: C116... 250,000 MMF PORN200; 200 VDCW; P123ZNGP (80058)	EA	2				*	*	*			7-98	C116
XHZZ		CAPACITOR, FIXED, PAPER DIELECTRIC: C205... 250,000 MMF PORN200; 200 VDCW; P123ZNGP (80058)	EA	REF				*	*	*			7-15	C205
PAHZZ	5910-667-7307	CAPACITOR, FIXED, PAPER DIELECTRIC: C801-A, A.C. 250,000 MMF PORN 4100; 2000 VDCW; 03130721 (80058)	EA	1				*	*	*		3	7-15	C801
XHZZ		CAPACITOR, FIXED, PAPER DIELECTRIC: C118... 03130721 (80058)	EA	2				*	*	*		3	7-98	C118

CONTINUED

SECTION II

TM 11-6625-540-40P

(1) SMR CODE	(2) FEDERAL STOCK NUMBER	(3) DESCRIPTION REFERENCE NUMBER & MFR CODE    USABLE ON CODE		(4) UNIT OF MEAS	(5) QTY INC IN UNIT	(6) 30-DAY DS MAINT ALLOWANCE			(7) 30 DAY GS MAINT ALLOWANCE			(8) 1 YR ALW PER EQUIP CNTGCT	(9) DEPOT ALW PER EQUIP	(10) ILLUSTRATION				
						a	(b)	c)	(a)	(b)	(c)			(a)	(b)	(c)	(a)	(b)
CONTINUED																		
XDEZZ		500,000 MMF PORN20%; 200 VDCW; P123ZNGP (80058)		EA	REF				*	*	*			7-9B	C119			
PAMZZ	5910-943-9277	CAPACITOR, FIXED, PAPER DIELECTRIC: C119... 500,000 MMF PORN20%; 200 VDCW; P123ZNGP (80058)	C119...	EA	1				*	*	*		3	7-9B	C401			
XDEZZ		1.0 MF 20%; 200 VDCW; P123ZNG (80058)		EA	1				*	*	*			7-9B	C803			
PAMZZ	5910-636-4271	CAPACITOR, VARIABLE, CERAMIC DIELECTRIC:.... C117 4 TO 30 MMF; 500 VDCW; SPEC JAN-C-81 TYPE:		EA	3				*	*	*		2	7-9B	C117			
PAMZZ	5910-636-4271	CULIC300 (81350) CAPACITOR, VARIABLE, CERAMIC DIELECTRIC:.. C517 4 TO 30 MMF; 500 VDCW; SEE FIGURE 7- 12B		EA	REF				*	*	*			7-2	C517			
PAMZZ	5910-636-4271	CULIC300 (81350) CAPACITOR, VARIABLE, CERAMIC DIELECTRIC:.. C704 4 TO 30 MMF; 500 VDCW;		EA	REF				*	*	*			7-3	C704			
XDEZZ		CULIC300 (81350) CAPACITOR, FIXED, CERAMIC DIELECTRIC: C121. 10,000 MMF P80 M20%; 450 VDCW;		EA	16				*	*	*			7-14	C121			
XDEZZ		DA048-003A (71590) CAPACITOR, FIXED, CERAMIC DIELECTRIC:..... C207 10,000 MMF P80 M20%; 450 VDCW;		EA	REF				*	*	*			7-14	C207			
XDEZZ		DA048-003A (71590) CAPACITOR, FIXED, CERAMIC DIELECTRIC:..... C208 10,000 MMF P80 M20%; 450 VDCW;		EA	REF				*	*	*			7-19	C208			
XDEZZ		DA048-003A (71590) CAPACITOR, FIXED, CERAMIC DIELECTRIC:..... C403 10,000 MF P80 M20%; 450 VDCW;		EA	REF				*	*	*			7-9A	C403			
XDEZZ		DA048-003A (71590) CAPACITOR, FIXED, CERAMIC DIELECTRIC:..... C404 10,000 MMF P80 M20%; 450 VDCW		EA	REF				*	*	*			7-9B	C404			
XDEZZ		DA048-003A (71590) CAPACITOR, FIXED, CERAMIC DIELECTRIC:..... C508 10,000 MMF P80 M20%; 450 VDCW; SEE FIGURE 7-12B		EA	REF				*	*	*				C508			
XDEZZ		DA048-003A (71590) CAPACITOR, FIXED, CERAMIC DIELECTRIC:..... C509 10,000 MMF P80 M20%; 450 VDCW; (SEE FIGURE 7-12B)		EA	REF				*	*	*				C509			
XDEZZ		DA048-003A (71590) CAPACITOR, FIXED, CERAMIC DIELECTRIC:..... C516 10,000 MMF P80 M20%; 450 VDCW; (SEE FIGURE 7-12B)		EA	REF				*	*	*				C516			
XDEZZ		DA0048-003A (71590) CAPACITOR, FIXED, CERAMIC DIELECTRIC: C519. 10,000 MMF P80 M20%; 450 VDCW; DA048-003A (71590)		EA	REF				*	*	*			7-13	C519			

SECTION II

TM 11-6625-540-40P

(1) SMR CODE	(2) FEDERAL STOCK NUMBER	(3) DESCRIPTION REFERENCE NUMBER & MFR. CODE USABLE ON CODE	(4) UNIT OF MEAS	(5) QTY INC IN UNIT	(6) 30-DAY DS MAINT ALLOWANCE			(7) 30-DAY US MAINT ALLOWANCE			(8) 1-YR ALW PER 100 EQUIP CNTGCT	(9) DEPOT MAINT ALW PER 100 EQUIP	(10) ILLUSTRATION	
					(a)	(b)	(c)	(a)	(b)	(c)			(a)	(b)
					1 20	21 50	51 100	1 20	21-50	51-100			FIGURE NO	ITEM NO
XDHZZ		KNOB: A104 BLACK PHENOLIC, ROUND W/BAR... FACE: 0.7" OD X 0.362" THK O/A; ALUMINUM OR PLATED STEEL INSERT TO ACCOMMODATE 0.250 SHAFT; 49009661 (80058)	EA	6				*	*	*				A104
PAWZZ	6240-567-2503	LAMP, GLOW: E201 NEON, 80 V DC MAX..... STRIKING VOLTAGE: CYLINDRICAL BULB APPROX 1" LG X .244" DIA; CLEAR 12007161 (80058)	EA	4				*	*	*		3	7-16	E201
PAWZZ	6240-567-2503	LAMP, GLOW: E202 NEON, 80 V DC MAX..... STRIKING VOLTAGE: CYLINDRICAL BULB APPROX 1" LG X .244" DIA; CLEAR; 12007161 (80058)	EA	REF				*	*	*			7-15	E202
PAWZZ	62401-567-2503	LAMP, GLOW: E501 NEON, 80 V DC MAX..... STRIKING VOLTAGE: CYLINDRICAL BULB APPROX 1" LG X .244" DIA; CLEAR; 12007161 (80058)	EA	REF				*	*	*			7-12	E501
PAWZZ	6240-567-2503	LAMP, GLOW: E502 NEON, 80 V DC MAX..... STRIKING VOLTAGE: CYLINDRICAL BULB APPROX 1" LG X .244" DIA; CLEAR; 12007161 (80058)	EA	REF				*	*	*			7-12	E302
PAWZZ	6240-700-6897	LAMP, INCANDESCENT: 1802 6 V, 1/4..... AMP: SPECIAL WHITE LENS; 9/16" LG X 3/8" DIA O/A; 86LAP (01009)	EA	4				*	*	*		50	7-19	1802
XDHZZ		LAMP, INCANDESCENT: 1801 6 V, 1/4..... AMP: SPECIAL RED LENS; 9/16" LG O/A; 86LAR (01009)	EA	2				*	*	*			7-19	1801
PAWZZ	6615-091-9514	NETWORK, PULSE DELAY: DL101 5-3/8" LG X.. 3/4" X 3/4" EXCEL TERM; 88000824 (80058)	EA	1				*	*	*		3	7-14	
PAWZZ	5915-627-8044	NETWORK, PULSE DELAY: NO-REF-DESIG 4 CYC. TO 4 MEG BAND WD; HS: 11-1/4 IN X 13/32 IN DIA; (FOR USE ON CRDR NO. NOBSR 64814 ONLY) 458253 (74096)	EA	1				*	*	*		3		
PAWZZ	5905-096-6982	OSCILLOSCOPE SUBASSEMBLY: NO-REF-DESIG 4 RESISTORS, MTD ON WINCHESTER CONNECTOR; PROTECTED BY ALUMINIUM HOOD 1- 1/2" LG X 19/32" HD X 29/64" ID; 02220811 (80058)	EA	1				*	*	*		3		
XDHZZ		POST, BINDING: E101 19/32" ABOVE MTG..... SURFACE: 3/8" HD; 10 (80058)	EA	1				*	*	*			7-9C	E101
PAWZZ	6625-649-1917	PROD TEST MX-1604/USH-32: 2903 62.5 V... MAX: 10 CYC TO 15 KC MODULATION FREQ; .5 TO 400 MEGACYCLES CARRIED FREQ; 7 MMF INPUT CAPACITY; FIXED TEST PAD; PHENOLIC HANDLE 4/16 X 9/16 O/A 50093051 (80058)	EA	1				*	*	*		3	7-25	2903
PAWZZ	6625-309-2747	PROD TEST MX-1609/USH-32: 2901 600V DC.. MAX, 2 V RMS AC MAX; 7 MEGACYCLES FREQUENCY; 10 MMF INPUT CAPACITY; BRASS CONTINUED	EA	1				*	*	*		3	7-23	2901

(1) SMR CODE	(2) FEDERAL STOCK NUMBER	(3) DESCRIPTION REFERENCE NUMBER & MFR CODE USABLE ON CODES	(4) UNIT OF MEAS	(5) QTY INC IN UNIT	(6) 30-DAY DS MAINT ALLOWANCE			(7) 30-DAY GS MAINT ALLOWANCE			(8) 1-YR ALW PER 100 EQUIP CNTGCY	(9) DEPOT MAINT ALW PER 100 EQUIP	(10) ILLUSTRATION	
					(a)	(b)	(c)	(a)	(b)	(c)			(a)	(b)
					1-20	21-50	51-100	1-20	21-50	51-100			FIGURE NO	ITEM NO
		CONTINUED												
PAHZZ	6250-500-3973	TYPE; SPEC JAN-1A INTO (61350) LAMP HOLDER: XI801 ACCOMODATES SPECIAL.. MINIATURE SCREW BASE; MOLDED PLASTIC SHELL: 5/8" LG X 13/32" DIA; 86LBMA (56289)	EA	2				*	*	*		5		
PAHZZ	6250-500-3973	LAMP HOLDER: XI802 ACCOMODATES SPECIAL.. MINIATURE SCREW BASE; MOLDED PLASTIC SHELL: 5/8" LG X 13/32" DIA; 86LBMA (56289)	EA	REF				*	*	*				
PAHZZ	5315-501-3372	FILTER, RADIO INTERFERENCE: Z801 2..... INDUCTORS: 750 MH INDUCTANCE EA; NO RESISTORS: 4 CAPACITORS 0.005 MFD P BOX M 20% EA; CBM TYPE DM2-502; 0 VDC; 2 X 1.25AMP AC; 88000803 (80058)	EA	1				*	*	*		3	7-19	Z801
PAQZZ	6625-503-0663	FILTER, LIGHT, CATHODE RAY TUBE: O202..... GREEN: 5" LG X 2-3/4" W X 0.062" THK; ROHM MAASPLEXIGLASS COLOR 2092; 48003851 (80058)	EA	1				*	*	*		3		O202
PAQZZ	5920-280-4960	FUSE, CARTRIDGE: F801 2 AMP, 250V; GLASS... BODY, ONE TIME; 1-1/4" LG X 0.250" OD; SPEC MIL-F-15160A, F02G2R00A (81349)	EA	4				*	*	*		50	7-19	F801
PAQZZ	5920-280-4960	FUSE, CARTRIDGE: F802 2 AMP, 250V; GLASS... BODY, ONE TIME; 1-1/4" LG X 0.250" OD; SPEC MIL-F-15160A, F02G2R00A (81349)	EA	REF				*	*	*			7-19	F802
XDRZZ		INSULATOR, STANDOFF: H210 TYPE PBE..... PLASTIC; CYLINDRICAL; 2" LG X 5/8" DIA, TAPPED EACH END FOR 3/8 32 THD; 4100751 (80058)	EA	1				*	*	*				H210
XDRZZ		INSULATOR, STANDOFF: H208 TYPE PBE..... PLASTIC; CYLINDRICAL; 1 1/4" LG X 5/8" DIA, TAPPED EACH END FOR 3/8 32 THREAD; 4100751 (80058)	EA	1				*	*	*				H208
XDRZZ		KNOB: A102 ROUND; BLACK PHENOLIC; 0.7".. OD X 0.562" THK O/A; ALUMINUM OR PLATE STEEL INSERT TO ACCOMODATE 0.187" SHAFT;	EA	2				*	*	*				A102
PAHZZ	5355-644-4128	45005662 (80058) KNOB: A101 DODECAHEDRON; BLACK PHENOLIC; 0.992" OD X 0.594" THK O/A; 0.267 BRASS INSERT, ACCOMODATE 0.265 SHAFT; PART 45005631	EA	5				*	*	*		3		A101
PAHZZ	5355-567-8586	KNOB: A501 ROUND BLACK PHENOLIC, W/BOR.. FACE: 0.7" OD X 0.562" THK O/A; ACCOMODATES 0.125" DIA SHAFT; ALUMINUM OR STEEL INSERT, 45005663 (80058)	EA	1				*	*	*		3		A501

## SECTION II

TM 11-6625-540-40P

(1) SMR CODE	(2) FEDERAL STOCK NUMBER	(3) DESCRIPTION  REFERENCE NUMBER & MFR. CODE    USABLE ON CODE	(4) UNIT OF MEAS	(5) QTY INC IN UNIT	(6) 30-DAY DS MAINT ALLOWANCE			(7) 30-DAY GS MAINT ALLOWANCE			(8) 1-YR ALW PER 100 EQUIP CNTGCT	(9) DEPOT MAINT ALW PER 100 EQUIP	(10) ILLUSTRATION	
					(a)	(b)	(c)	(a)	(b)	(c)			(a)	(b)
					1-20	21-50	51-100	1-20	21-50	51-100			FIGURE NO	ITEM NO
PANZZ	5935-921-5609	CONNECTOR, RECEPTACLE, ELECTRICAL: P907... STRAIGHT SHAPE; 5 RD MALE CONT; 1/32" LG X 2 1/32" DIA O/A; MSP (81312)	EA	REF				*	*	*			7-19	P907
PANZZ	5935-683-2464	CONNECTOR, RECEPTACLE, ELECTRICAL: J103 5. RD FEMALE CONT; STRAIGHT SHAPE; 1/32" LG X 2 1/32" DIA O/A; MSS (81312)	EA	1				*	*	*	3		7-9C	J103
PANZZ	5935-258-9961	CONNECTOR, RECEPTACLE, ELECTRICAL: J802 2. FE CONT; STRAIGHT TYPE; 5/8" LG X 1 1/16" W X 5/16" H O/A; 462MINI-2 (01009)	EA	1				*	*	*	3		7-19	J802
XDRZZ		CONNECTOR, RECEPTACLE, ELECTRICAL: J803 8. FLAT FE CONT; STRAIGHT TYPE; 2-1/16" LG X 7/8" WD; 5 AMP, 600 V; 462MINI-2 (02660)	EA	1				*	*	*			7-13	J803
XDRZZ		CONNECTOR, RECEPTACLE, ELECTRICAL: J101 1. RD FE CONT; STRAIGHT TYPE; 1-1/32" LG X 1/2" DIA;	EA	8				*	*	*			7-9C	J101
XDRZZ		UG625U (81350) CONNECTOR, RECEPTACLE, ELECTRICAL: J102 1. RD FE CONT; STRAIGHT TYPE; 1-1/32" LG X 1/2" DIA;	EA	REF				*	*	*			7-9C	J102
XDRZZ		UG625U (81350) CONNECTOR, RECEPTACLE, ELECTRICAL: J301 1. RD FE CONT; STRAIGHT TYPE; 1-1/32" LG X 1/2" DIA;	EA	REF				*	*	*			7-19	J301
XDRZZ		UG625U (81350) CONNECTOR, RECEPTACLE, ELECTRICAL: J501 1. RD FE CONT; STRAIGHT TYPE; 1-1/32" LG X 1/2" DIA;	EA	REF				*	*	*			7-19	J501
XDRZZ		UG625U (81350) CONNECTOR, RECEPTACLE, ELECTRICAL: J601 1. RD FE CONT; STRAIGHT TYPE; 1-1/32" LG X 1/2" DIA;	EA	REF				*	*	*			7-19	J601
XDRZZ		UG625U (81350) CONNECTOR, RECEPTACLE, ELECTRICAL: J701 1. RD FE CONT; STRAIGHT TYPE; 1-1/32" LG X 1/2" DIA;	EA	REF				*	*	*			7-19	J701
XDRZZ		UG625U (81350) CONNECTOR, RECEPTACLE, ELECTRICAL: J901 1. RD FE CONT; STRAIGHT TYPE; 1-1/32" LG X 1/2" DIA;	EA	REF				*	*	*			7-19	J901
XDRZZ		UG625U (81350) CONNECTOR, RECEPTACLE, ELECTRICAL: J902 1. RD FE CONT; STRAIGHT TYPE; 1-1/32" LG X 1/2" DIA;	EA	REF				*	*	*			7-19	J902
XDRZZ		UG625U (81350) CRYSTAL UNIT, RECTIFYING: CR701 (SEE FIG. 7-12C) GERMANIUM TYPE; SPEC JAN-1A INTD (81350)	EA	2				*	*	*				
XDRZZ		CRYSTAL UNIT, RECTIFYING: CR901 GERMANIUM CONTINUED	EA	REF				*	*	*			7-19	

SECTION II

TM 11-6625-540-40P

(1) SMR CODE	(2) FEDERAL STOCK NUMBER	(3) DESCRIPTION	(4) UNIT OF MEAS	(5) QTY INC IN UNIT	(6) 30-DAY DS MAINT ALLOWANCE			(7) 30-DAY GS MAINT ALLOWANCE			(8) 1-YR ALW PER EQUIP CNTGCT	(9) DEPOT MAINT ALW PER EQUIP	(10) ILLUSTRATION	
					(a)	(b)	(c)	(a)	(b)	(c)			(a)	(b)
					1-20	21-50	51-100	1-20	21-50	51-100			FIGURE NO	ITEM NO
PAQZZ	5960-583-4110	ELECTRON TUBE: V901 GLASS ENVELOPE; MIL-E-18; 5702NA (80058)	EA	1				*	*	*	100	7-23	V901	
PAQZZ	5960-583-4110	ELECTRON TUBE: V301 VHF TWIN DIODE; SPEC MIL-E-18; 5726-6AL5W (80058)	EA	1				*	*	*	100	7-13	V301	
PAQZZ	5960-262-0210	ELECTRON TUBE: V503 GLASS ENVELOPE; SPEC MIL-E-18- 5814A (80058)	EA	3				*	*	*	100	7-13	V503	
PAQZZ	5960-262-0210	ELECTRON TUBE: V505 GLASS ENVELOPE; SPEC MIL-E-18 5514A (80058)	EA	REF				*	*	*		7-13	V505	
PAQZZ	5960-262-0210	ELECTRON TUBE: V601 GLASS ENVELOPE; SPEC MIL-E-18 5814A (80058)	EA	REF				*	*	*		7-9C	V601	
XRHZZ		CLIP, ELECTRICAL: EV801 19/32" LG X 7/16" OD; 90LAPW907-22 (01009)	EA	1				*	*	*				
PAHZZ	5935-665-6544	CONNECTOR, ADAPTER: E901 STRAIGHT TYPE, 1 RD MALE CONT, ONE END 1 RD FE CONT OTHER END; 1-5/16" LG X 9/16" DIA O/A; 09035031 (80058)	EA	2				*	*	*	3	7-19	E901	
PAHZZ	5935-665-6544	CONNECTOR, ADAPTER: F902 STRAIGHT TYPE, 1 RD MALE CONT, ONE END 1 RD FE CONT OTHER END; 1-5/16" LG X 9/16" DIA O/A; 09035031 (80058)	EA	REF				*	*	*		7-19	E902	
PAHZZ	5935-549-2645	CONNECTOR, PLUG, ELECTRICAL: P802 STRAIGHT TYPE; 2 CONT; 5/8" LG X 11/16" W X 5/16" H; 462MIN2 (01009)	FA	1				*	*	*	3	7-17	P802	
PAHZZ	5935-259-3607	CONNECTOR, PLUG: P803 8 FLAT MALE CONT; STRAIGHT TYPE POLARIZED; 2-1/16" LG X 7/8" W; (See Figure 7-12C) 26-182 (02660)	EA	1				*	*	*	3	7-12	P803	
PAHZZ	5935-850-9157	CONNECTOR, PLUG: P902 1 MALE..... CONT; STRAIGHT TYPE; POLARIZED; UG260U (81350)	EA	5				*	*	*	3	7-19	P902	
PAHZZ	5935-850-9157	CONNECTOR, PLUG: P903 1 MALE..... CONT; STRAIGHT TYPE; POLARIZED; UG260U (81350)	EA	REF				*	*	*		7-19	P903	
PAHZZ	5935-850-9157	CONNECTOR, PLUG: P904 1 MALE..... CONT; STRAIGHT TYPE; POLARIZED; UG260U (81350)	EA	REF				*	*	*		7-19	P904	
PAHZZ	5935-850-9157	CONNECTOR, PLUG: P905 1 MALE..... CONT; STRAIGHT TYPE; POLARIZED; UG260U (81350)	EA	REF				*	*	*		7-19	P905	
PAHZZ	5935-850-9157	CONNECTOR, PLUG: P906 1 MALE..... CONT; STRAIGHT TYPE; POLARIZED; UG260U (81350)	EA	REF				*	*	*		7-19	P906	
PAHZZ	5935-921-5609	CONNECTOR, RECEPTACLE, ELECTRICAL: P901.... STRAIGHT SHAPE; 5 RD MALE CONT; 11/32" LG X 21/32" DIA O/A; M5P (81312)	EA	2				*	*	*	3	7-19	P901	

(1) SMR CODE	(2) FEDERAL STOCK NUMBER	(3) DESCRIPTION REFERENCE NUMBER & MFR. CODE USABLE ON CODE	(4) UNIT OF MEAS	(5) QTY INC IN UNIT	(6) 30-DAY DS MAINT ALLOWANCE			(7) 30-DAY GS MAINT ALLOWANCE			(8) 1-YR ALW PER 100 EQUIP CNTGCT	(9) DEPOT MAINT ALW PER 100 EQUIP	(10) ILLUSTRATION	
					(a)	(b)	(c)	(a)	(b)	(c)			(a)	(b)
					1-20	21-50	51-100	1-20	21-50	51-100			FIGURE NO	ITEM NO.
PAZZ	5935-843-7362	CONNECTOR, PLUG ELECTRICAL; NO-REF-DESIG.. 2 FLAT MALE PARALLEL CONTACTS 1 HOLLOW MODE CONTACT; PER SPEC MIL-C-3767; UP121M (81349)	EA	1				*	*	*		3		
PAZZ	5960-188-8612	ELECTRON TUBE: V801 GLASS ENVELOPE; SPEC MIL-E-18 1Z2 (81349)	EA	1				*	*	*		100	7-13	V801
PAZZ	5960-270-5511	ELECTRON TUBE: V201 CATHODE RAY; GLASS.. ENVELOPE; SPEC RTMA REG; 3WP1 (80058)	EA	1				*	*	*		100	5-2	V201
PAZZ	5960-543-0219	ELECTRON TUBE: V104..... 6AN5A (81350)	EA	3				*	*	*		100	7-15	V104
PAZZ	5960-543-0219	ELECTRON TUBE: V105..... 6AN5A (81350)	EA	REF				*	*	*			7-15	V105
PAZZ	5960-543-0219	ELECTRON TUBE: V402..... 6AN5A (81350)	EA	REF				*	*	*			7-9C	V402
PAZZ	5960-179-3710	ELECTRON TUBE: V504 GLASS ENVELOPE; SPEC MIL-E-18; 6AU6WA (80058)	EA	3				*	*	*		100	7-13	V504
PAZZ	5960-179-3710	ELECTRON TUBE: V506 GLASS ENVELOPE; SPEC MIL-E-18 6AU6WA (80058)	EA	REF				*	*	*			7-13	V506
PAZZ	5960-179-3710	ELECTRON TUBE: V507 GLASS ENVELOPE; SPEC MIL-E-18 6AU6WA (80058)	EA	REF				*	*	*			7-13	V507
PAZZ	5960-272-9182	ELECTRON TUBE: V802 GLASS ENVELOPE; SPEC MIL-E-18; 6X4W (80058)	EA	2				*	*	*		100	7-13	V802
PAZZ	5960-272-9182	ELECTRON TUBE: V803 GLASS ENVELOPE; SPEC MIL-E-18; 6X4W (80058)	EA	REF				*	*	*			7-13	V803
PAZZ	5960-179-4446	ELECTRON TUBE: V203 TWIN TRIODE;..... 12AT7WA (80058)	EA	6				*	*	*		100	7-13	V203
PAZZ	5960-179-4446	ELECTRON TUBE: V401 TWIN TRIODE... 12AT7WA (80058)	EA	REF				*	*	*			7-9C	V401
PAZZ	5960-179-4446	ELECTRON TUBE: V501 TWIN TRIODE..... 12AT7WA (80058)	EA	REF				*	*	*		*	7-13	V501
PAZZ	5960-179-4446	ELECTRON TUBE: V502 TWIN TRIODE..... 12AT7WA (80058)	EA	REF				*	*	*			7-13	V502
PAZZ	5960-179-4446	ELECTRON TUBE: V701 TWIN TRIODE (SEE.... FIGURE 7-12C) 12AT7WA (80058)	EA	REF				*	*	*				V701
PAZZ	5960-179-4446	ELECTRON TUBE: V702 TWIN TRIODE (SEE.... FIGURE 7-12C) 12AT7WA (80058)	EA	REF				*	*	*				V702
PAZZ	5960-262-0286	ELECTRON TUBE: V202 GLASS ENVELOPE;..... 5651WA (80058)	EA	1				*	*	*		100	7-13	V202
PAZZ	5960-134-6031	ELECTRON TUBE: V101..... 5654-6AK5W (80058)	EA	3				*	*	*		100	7-17	V101
PAZZ	5960-134-6031	ELECTRON TUBE: V102..... 5654-6AK5W (80058)	EA	REF				*	*	*			7-9C	V102
PAZZ	5960-134-6031	ELECTRON TUBE: V103..... 5654-6AK5W (80058)	EA	REF				*	*	*			7-9C	V103

(1) SMR CODE	(2) FEDERAL STOCK NUMBER	(3) DESCRIPTION REFERENCE NUMBER & MFR CODE USABLE ON CODE	(4) UNIT OF MEAS	(5) QTY INC IN UNIT	(6) 30-DAY DS MAINT ALLOWANCE			(7) 30-DAY GS MAINT ALLOWANCE			(8) 1-YR ALW PER 100 EQUIP CNTGCY	(9) DEPOT MAINT ALW PER 100 EQUIP	(10) ILLUSTRATION	
					(a)	(b)	(c)	(a)	(b)	(c)			(a)	(b)
					1-20	21-50	51-100	1-20	21-50	51-100			FIGURE NO	ITEM NO
		CONTINUED												
PAHZZ	5950-645-2529	25 MA DC; 3/4 IN LG X 3/16 IN OD; 21009321 (80058) COIL,RADIO FREQUENCY: L504 (SEE FIG. 7- 12C) 4.7 MH PORM3%; AT 250 KC; 100 OHMS MADC RESISTANCE 15 MA DC 3/4 LG X 1/4 OD; 21009431 (80058)	EA	2				*	*	*		3	L504	
PAHZZ	5950-645-2529	COIL,RADIO FREQUENCY: L505 4.7 MH..... PORM3%; AT 250 KC; 142 OHMS DC RESISTANCE; 15 MA DC; 3/4 IN LG X 1/4 IN OD;(SEE FIGURE 7-12C) 21009431 (80058)	EA	REF				*	*	*			L505	
XDHZZ		COIL,RADIO FREQUENCY: L101 SINGLE WND:.. 14-22 MH, 10 MA MIN; 1.4 OHMS .500" LG X .250" DIA; 21007871 (80058)	EA	1				*	*	*			7-9B L101	
PAHZZ	5950-647-9581	COIL,RADIO FREQUENCY: L102 UNIVERSAL.... WND: 17-33 UH; 2.3 OHMS DC RESISTANCE; 0.500"LG X 0.250" DIA; 21007861 (80058)	EA	1				*	*	*		3	7-9B L102	
PAHZZ	5950-645-2528	COIL,RADIO FREQUENCY: L503 (SEE FIG. 7- 12C) 150 UH PORM3%; AT 790 KC; 10 OHMS DC RESISTANCE 15 MA DC; 5/8" LG X 0.200" OD; 21009421 (80058)	EA	1				*	*	*		3	L503	
PAHZZ	5950-645-2526	COIL,RADIO FREQUENCY: L501 (SEE FIG. 7- 12C) 450 UH PORM3%; AT 790 KC; 15 OHMS DC RESISTANCE 20 MA DC; 3/4" LG X 0.200" OD; 21009411 (80058)	EA	2				*	*	*		3	L501	
PAHZZ	5950-645-2526	COIL, RADIO FREQUENCY: L502 450 UH..... PORM3%; AT 790 KC; 15 OHMS DC RESISTANCE 20 MA DC; 3/4 IN LG X 0.200 IN OD; (SEE FIGURE 7-12C) 21009411 (80058)	EA	REF				*	*	*			L502	
XDHZZ		COIL,RADIO FREQUENCY: L901 1 UH PORM10%; AT 25MC; 0.3 OHMS DC; 5/16" LG X 0.313" OD; 21009331 (80058)	EA	1				*	*	*			7-23 L901	
XDHZZ		COIL,RADIO FREQUENCY: L105 2 PIE WND; 24 UH PORM3%; AT 2.5 MA; 10 OHMS MAX RESISTANCE, 85 MA DC; 5/8" LG X 0.200" OD; 21009381 (80058)	EA	1				*	*	*			7-14 L105	
XDHZZ		COIL,RADIO FREQUENCY: L107 48 UH PORM3%; AT 2.5 MA; 20 OHMS MAX DC RESISTANCE 85 MA DC; 5/8" LG X 0.200" OD; 21009401 (80058)	EA	2				*	*	*			7-9B L107	
XDHZZ		COIL, RADIO FREQUENCY: L108 48 UH..... PORM3%; AT 2.5 MA; 20 OHMS MAX DC RESISTANCE 85 MA DC; 5/8" LG X 0.200" OD; 21009401 (80058)	EA	REF				*	*	*			7-14 L108	
XDHZZ		COIL,RADIO FREQUENCY: L103 SINGLE WND:.. 8-16 UH; 20 MA MIN; 1.4 OHMS DC RESISTANCE;.500" LG X .250" DIA; DUMONT 21007891 (80058)	EA	1				*	*	*			7-9B L103	



(1) SMR CODE	(2) FEDERAL STOCK NUMBER	(3) DESCRIPTION REFEREKLE NUMBER & MFR. CODE USABLE ON CODE	(4) UNIT OF MEAS	(5) QTY INC IN UNIT	(6) 30-DAY DS MAINT ALLOWANCE			(7) 30-DAY GS MAINT ALLOWANCE			(8) 1-YR ALW PER 100 EQUIP CNTGCT	(9) DEPOT MAINT ALW PER 100 EQUIP	(10) ILLUSTRATION	
					(a)	(b)	(c)	(a)	(b)	(c)			(a)	(b)
					1-20	21-50	51-100	1-20	21-50	51-100			FIGURE NO	ITEM NO
XIHZZ		CAPACITOR, FIXED, CERAMIC DIELECTRIC: C522. 10,000 MMF P80 M20%; 450 VDCM; SEE FIGURE 7-12B	EA	REF				*	*	*			C522	
XIHZZ		DA048-003A (71590) CAPACITOR, FIXED, CERAMIC DIELECTRIC:..... C601 10,000 MMF P80 M20%; 450 VDCM;	EA	REF				*	*	*			7-17 C601	
XIHZZ		DA048-003A (71590) CAPACITOR, FIXED, CERAMIC DIELECTRIC:..... C603 10,000 MMF P80 M20%; 450 VDCM;	EA	REF				*	*	*			7-98 C603	
XIHZZ		DA048-003A (71590) CAPACITOR, FIXED, CERAMIC DIELECTRIC:..... C712 10,000 MMF P80 M20%; 450 VDCM; SEE FIGURE 7-12B	EA	REF				*	*	*			C712	
XIHZZ		DA048-003A (71590) CAPACITOR, FIXED, CERAMIC DIELECTRIC: C715. 10,000 MMF P80 M20%; 450 VDCM; SEE FIGURE 7-12B	EA	REF				*	*	*			C715	
XIHZZ		DA048-003A (71590) CAPACITOR, FIXED, CERAMIC DIELECTRIC:..... C716 10,000 MMF P80 M20%; 450 VDCM;	EA	REF				*	*	*			7-19 C716	
XIHZZ		DA048-003A (71590) CAPACITOR, FIXED, CERAMIC DIELECTRIC:..... C717 10,000 MMF P80 M20%; 450 VDCM	EA	REF				*	*	*			7-19 C717	
XIHZZ		DA048-003A (71590) CAPACITOR, FIXED, CERAMIC DIELECTRIC: C201. 4700 MMF P150% M0%; 200 VDCM;	EA	3				*	*	*			7-13 C201	
XIHZZ		156289 (Y4621) CAPACITOR, FIXED, CERAMIC DIELECTRIC:..... C202 4700 MMF P150% M0%; 200 VDCM;	EA	REF				*	*	*			7-13 C202	
XIHZZ		156289 (Y4621) CAPACITOR, FIXED, CERAMIC DIELECTRIC:..... C203 4700 MMF P150% M0%; 2000 VDCM;	EA	REF				*	*	*			7-16 C203	
XIHZZ		156289 (Y4621) CAPACITOR, ASSEMBLY: C101A, B, C, D, E 5..... CAPACITORS VARIABLE; CERAMIC DIELECTRIC; 1.5-7 MMF MIN VARIATION; 500 VDCM 2-3/16" LG X 1-1/2" W DUMONT PART/DWG;	EA	1				*	*	*			7-10 C101	
XIHZZ		03157711 (80058) CAPACITOR, VARIABLE, PLASTIC DIELECTRIC:..... C904 4-9 UJF SLIDING BARREL TYPE; 1 SECTION; SCREW DRIVEN SLOT ADJUSTMENT;	EA	1				*	*	*			7-24 C904	
PAHZZ	5950-646-1373	03137761 (80058) COIL, RADIO FREQUENCY: L201 1.5 MH..... PORMS%; AT 250 KC; 60 OHM DC RESISTANCE; 25 MA DC; 3/4 IN LG X 3/16 IN OD;	EA	3				*	*	*		3	7-16 L201	
PAHZZ	5950-646-1373	21009321 (80058) COIL, RADIO FREQUENCY: L701 1.5 MH..... PORMS%; AT 250 KC; 24 OHM DC RESISTANCE; 25 MA DC; 3/4 IN LG X 3/16 IN OD;	EA	REF				*	*	*			7-18 L701	
PAHZZ	5950-646-1373	21009321 (80058) COIL, RADIO FREQUENCY: L702 1.5 MH..... PORMS%; AT 250 KC; 24 OHM DC RESISTANCE;	EA	REF				*	*	*			7-18 L702	

CONTINUED

## SECTION II

TM 11-6625-540-40P

(1) SMR CODE	(2) FEDERAL STOCK NUMBER	(3) DESCRIPTION REFERENCE NUMBER & MFR CODE    USABLE ON CODE		(4) UNIT OF MEAS	(5) QTY INC IN UNIT	(6) 30 DAY DS MAINT ALLOWANCE			(7) 30 DAY GS MAINT ALLOWANCE			(8) 1-YR ALW PER 100 EQUIP CNTG	(9) DEPOT MAINT ALW PER 100 EQUIP	(10) ILLUSTRATION	
						(a)	(b)	(c)	(a)	(b)	(c)			(a)	(b)
						1 20	21-50	51-100	1 20	21 50	51-100			FIGURE NO	ITEM NO
		CONTINUED													
PAHZZ	6625-706-0797	TIP PLASTIC HANDLE; 68-5/8" LG; 50093111 (80058)		EA	1				*	*	*		3	7-24	2902
PAHZZ	5950-645-6023	PROD TEST MX-1610/USM-32; 2902 600 V.... MAX, 5 MEG FREQUENCY; 8 MUF CAPACITY; 72- 3/4" LG X 0.562" OD; 50093061 (80058)		EA	1				*	*	*		2	7-9B	L801
PAHZZ	5960-549-0017	REACTOR; L801 125 MA TO 300 OHMS DC..... RESISTANCE 3-1/4" LG X 1-13/16" W X 2-1/2 H; 21009311 (80058)		EA	1				*	*	*		3		
XDHZZ		RETAINER, ELECTRON TUBE; DV201 STEEL..... CADMIUM PLATED; FASTENS BY ONE 4.40 SCREW 7/16" LG; 1-3/4" OD; HAS 2 MTG TABS WITH ONE 0.166" MTG HOLE IN EA FOR TUBE BASE W/1/2 to 1-5/8 DIA 27007141 (80058)		EA	15				*	*	*				
XDHZZ		RETAINER, ELECTRON TUBE; DV104 PHOSPHOR... BRONZE, FOR 7 AND 9 PIN MINIATURE TUBES 1- 1/2" H; W73819 (77748)		EA	4				*	*	*				
PAHZZ		RETAINER, ELECTRON TUBE; DV101 PHOSPHOR... BRONZE, FOR 7 AND 9 PIN MINIATURE TUBES; W73818 (77748)		EA	2				*	*	*		3		
PAHZZ	5960-271-1396	RETAINER, ELECTRON TUBE; DV802 PHOSPHOR... BRONZE; FOR 7 AND 9 PIN MINIATURE TUBES 2" H; W73817 (77748)		EA	1				*	*	*		3		
PAHZZ	5905-192-0390	RETAINER, ELECTRON TUBE; DV801 PHENOLIC... 1-31/32" LG X 1-5/32" OD; 1/2" DIA HOLE CN TOP; 8292 (00629)		EA	3				*	*	*		3	7-16	R217
PAHZZ	5905-192-0390	RESISTOR, FIXED, COMPOSITION: R217 1..... MEG OHM PORM 5%; 1/2 W; RC20GF105J (81350)		EA	REF				*	*	*			7-9A	R304
PAHZZ	5905-192-0390	RESISTOR, FIXED, COMPOSITION: R304 1..... MEG OHM PORM 5%; 1/2 W; RC20GF105J (81350)		EA	REF				*	*	*				R518
PAHZZ	5905-104-5756	RESISTOR, FIXED, COMPOSITION: R518 1..... MEG OHM PORM 5%; 1/2 W; (See Figure 7-12A) RC20GF105J (81350)		EA	1				*	*	*		3		R715
PAHZZ		RESISTOR, FIXED, FILM: R535 (SEE FIG. 7-... 12A) 1 MEG OHM PORM 10%; 1/2 W; RC20GF105K (81350)		EA	1				*	*	*		3		R535
XDHZZ		RESISTOR, FIXED, FILM: R537 (SEE FIG. 7-... 12A) 1 MEG OHM PORM 5%; 1/2 W; DC1-2A (09250)		EA	1				*	*	*				R537
XDHZZ	5905-279-1868	RESISTOR, FIXED, COMPOSITION: R718 (SEE... FIG. 7-12A) 1.1 MEG OHM PORM 5%; 1/2 W; DC1-2A (80058) RC20GF115J (81350)		EA	1				*	*	*		3		R718

## SECTION II

TM 11-6625-540-40P

(1) SMR CODE	(2) FEDERAL STOCK NUMBER	(3) DESCRIPTION REFERENCE NUMBER & MFR CODE    USABLE ON CODE	(4) UNIT OF MEAS	(5) QTY INC IN UNIT	(6) 30-DAY D5 MAINT ALLOWANCE			(7) 30-DAY G5 MAINT ALLOWANCE			(8) 1 YR ALW PER 100 EQUIP CNTGCT	(9) DEPOT MAINT ALW PER 100 EQUIP	(10) ILLUSTRATION	
					(a)	(b)	(c)	(a)	(b)	(c)			(a)	(b)
					1-20	21-50	51-100	1-20	21-50	51-100			FIGURE NO	ITEM NO
PAHZZ	5905-111-4732	RESISTOR, FIXED, COMPOSITION: R717 (SEE... FIG. 7-12A) 1.2 MEGOHM PORM 38;1/2W; RC20GF125J (81350)	EA	1				*	*	*		3		R717
PAHZZ	5905-435-6560	RESISTOR, FIXED, COMPOSITION: R409 1.6.... MEGOHM PORM 58;1/2W; RC20GF165J (81350)	EA	1				*	*	*		3	7-9A	R409
XDHZZ		RESISTOR, FIXED, FILM: R106 1.160 MEGOHM.. PORM 18;1/2W; DC1-2 (77221)	EA	1				*	*	*			7-11	R106
PAHZZ	5905-111-4732	RESISTOR, FIXED, COMPOSITION: R119 1.2.... MEGOHM PORM 108;1/2W; RC20GF125K (81350)	EA	4				*	*	*		3	7-19	R119
PAHZZ	5905-111-4732	RESISTOR, FIXED, COMPOSITION: R504 1.2.... MEGOHM PORM 108;1/2W; (See Figure 7-12A) RC20GF125K (81350)	EA	REF				*	*	*				R504
PAHZZ	5905-111-4732	RESISTOR, FIXED, COMPOSITION: R508 1.2.... MEGOHM PORM 108;1/2W; (See Figure 7-12A) RC20GF125K (81350)	EA	REF				*	*	*				R508
PAHZZ	5905-111-4732	RESISTOR, FIXED, COMPOSITION: R522 1.2.... MEGOHM PORM 108;1/2W; (See Figure 7-12A) RC20GF125K (81350)	EA	REF				*	*	*				R522
PAHZZ	5905-111-4740	RESISTOR, FIXED, COMPOSITION: R408 1.8.... MEGOHM PORM 58;1/2W; RC20GF185J (81350)	EA	3				*	*	*		3	7-9A	R408
PAHZZ	5905-111-4740	RESISTOR, FIXED, COMPOSITION: R517 1.8.... MEGOHM PORM 58;1/2W; (See Figure 7-12A) RC20GF185J (81350)	EA	REF				*	*	*				R517
PAHZZ	5905-111-4740	RESISTOR, FIXED, COMPOSITION: R714 1.8.... MEGOHM PORM 58;1/2W; (See Figure 7-12A) RC20GF185J (81350)	EA	REF				*	*	*				R714
PAHZZ	5905-279-1754	RESISTOR, FIXED, COMPOSITION: R213 1.5.... MEGOHM PORM 58;1/2W; RC20GF155J (81350)	EA	3				*	*	*		3	7-16	R213
PAHZZ	5905-279-1754	RESISTOR, FIXED, COMPOSITION: R215 1.5.... MEGOHM PORM 58;1/2W; RC20GF155J (81350)	EA	REF				*	*	*			7-16	R215
PAHZZ	5905-279-1754	RESISTOR, FIXED, COMPOSITION: R546 1.5.... MEGOHM PORM 58;1/2W; RC20GF155J (81350)	EA	REF				*	*	*			7-19	R546
PAHZZ	5905-114-5398	RESISTOR, FIXED, COMPOSITION: R405 2.2.... MEGOHM PORM 108;1/2W; RC20GF225K (81350)	EA	2				*	*	*		3	7-9A	R405
PAHZZ	5905-114-5398	RESISTOR, FIXED, COMPOSITION: R406 2.2.... MEGOHM PORM 108;1/2W; RC20GF225K (81350)	EA	REF				*	*	*			7-9A	R406
XDHZZ		RESISTOR, FIXED, COMPOSITION: R713 (SEE... FIG. 7-12A) 2.4 MEGOHM PORM 58;2W; RC42GF245J (81349)	EA	1				*	*	*				R713
PAHZZ	5905-283-6687	RESISTOR, FIXED, FILM: R709 3.2 MEG PORM.. 18;1W; CA4R1 (77221)	EA	2				*	*	*		3	7-18	R709
PAHZZ	5905-283-6687	RESISTOR, FIXED, FILM: R710 3.2 MEG PORM.. CONTINUED	EA	REF				*	*	*			7-18	R710

## SECTION II

TM 11-6625-540-40P

(1) SMR CODE	(2) FEDERAL STOCK NUMBER	(3) DESCRIPTION REFERENCE NUMBER & MFR CODE    USABLE ON CODE		(4) UNIT OF MEAS	(5) QTY INC IN UNIT	(6) 30-DAY DS MAINT ALLOWANCE			(7) 30 DAY CS MAINT ALLOWANCE			(8) 1-YR ALW PER 100 EQUIP CNTGCT	(9) DEPOT MAINT ALW PER 100 EQUIP	(10) ILLUSTRATION		
						(a)	(b)	(c)	(a)	(b)	(c)			(a)	(b)	
						1-20	21-50	51-100	1-20	21-50	51-100			FIGURE NO	ITEM NO	
		CONTINUED														
PAHZZ	5905-106-9347	LE; LW; CA4R1 (77221) RESISTOR, FIXED, COMPOSITION: R307 3.3....	EA	2				*	*	*		3	7-9A	R307		
PAHZZ	5905-106-9347	MEG OHM PORM 10%; 1/2W; RC20GF335K (81350) RESISTOR, FIXED, COMPOSITION: R501 3.3MEG. PORM 10%; 1/2W; (See Figure 7-12A) RC20GF335K (81350)	EA	REF				*	*	*				R501		
PAHZZ	5905-279-1892	RESISTOR, FIXED, COMPOSITION: R513 (SEE... FIG. 7-12A) 6.8 MEG OHM PORM 5%; 1/2W; RC20GF685J (81350)	EA	2				*	*	*		3		R513		
PAHZZ	5905-279-1892	RESISTOR, FIXED, COMPOSITION: R525 6.8MEG. PORM 5%; 1/2W; RC20GF85J (81350)	EA	REF				*	*	*		*	7-12	R525		
PAHZZ	5905-279-1866	RESISTOR, FIXED, COMPOSITION: R143 10..... MEG OHM PORM 10%; 1/2W; RC20GF106K (81350)	EA	1				*	*	*		3	7-19	R143		
PAHZZ	5905-252-1046	RESISTOR, FIXED, COMPOSITION: R219 2.7MEG. RC20GF275K (81350)	EA	3				*	*	*		3	7-16	R219		
PAHZZ	5905-252-1046	RESISTOR, FIXED, COMPOSITION: R220 2.7MEG. RC20GF275K (81350)	EA	REF				*	*	*				7-16	R220	
PAHZZ	5905-252-1046	RESISTOR, FIXED, COMPOSITION: R527 2.7MEG. RC20GF275K (81350)	EA	REF				*	*	*				7-19	R527	
PAHZZ	5905-104-8032	RESISTOR, FIXED, COMPOSITION: R142 4.7 OHM PORM 10%; 1/2W; RC20GF475K (81350)	EA	1				*	*	*		3	7-15	R142		
XDHZZ		RESISTOR, FIXED, FILM: R908 7.6 MEG OHM.... PORM 1%; 1W; DC1 (09250)	EA	1				*	*	*				7-19	R908	
XDHZZ		RESISTOR, FIXED, COMPOSITION: R602 10 OHM. PORM 10% 1/2W; RC20GF100K (81350)	EA	1				*	*	*				7-9A	R602	
PAHZZ	5905-114-5388	RESISTOR, FIXED, COMPOSITION: R803 22 OHM. PORM 10%; 1/2W; RC20GF220K (81350)	EA	1				*	*	*		3	7-19	R803		
XDHZZ		RESISTOR, FIXED, COMPOSITION: R123 47 OHM. PORM 5%; 1/2W; RC20GF470J (81350)	EA	2				*	*	*				7-9A	R123	
XDHZZ		RESISTOR, FIXED, COMPOSITION: R149 47 OHM. PORM 5%; 1/2W; RC20CF470J (81350)	EA	REF				*	*	*				7-9A	R149	
PAHZZ	5905-185-8490	RESISTOR, FIXED, COMPOSITION: R112 4.7.... MEG OHM PORM 5%; RC20BF475J (81350)	EA	2				*	*	*		3	7-19	R112		
PAHZZ	5905-185-8490	RESISTOR, FIXED, COMPOSITION: R905 4.7..... MEG OHM PORM 5%; RC20BF475J (81350)	EA	REF				*	*	*				7-19	R905	
PAHZZ	5905-106-9344	RESISTOR, FIXED, COMPOSITION: R144 100 OHM PORM 10%; 1/2W; RC20GF101K (81350)	EA	2				*	*	*		3	7-14	R144		
PAHZZ	5905-106-9344	RESISTOR, FIXED, COMPOSITION: R145 100 OHM CONTINUED	EA	REF				*	*	*				7-19	R145	

## SECTION II

TM 11-6625-540-40P

(1) SMR CODE	(2) FEDERAL STOCK NUMBER	(3) DESCRIPTION REFERENCE NUMBER & MFR. CODE    USABLE ON CODE		(4) UNIT OF MEAS	(5) QTY INC IN UNIT	(6) 30-DAY DS MAINT ALLOWANCE			(7) 30-DAY GS MAINT ALLOWANCE			(8) 1-YR ALW PER 100 EQUIP CNTGCT	(9) DEPOT MAINT ALW PER 100 EQUIP	(10) ILLUSTRATION		
						(a)	(b)	(c)	(a)	(b)	(c)			(a)	(b)	
						1-20	21-50	51-100	1-20	21-50	51-100			FIGURE NO	ITEM NO	
		CONTINUED														
PAHZZ	5905-111-4736	PORM 10%:1/2W; RC20GF101K (81350) RESISTOR, FIXED, COMPOSITION:	R113 160 OHM	EA	2				*	*	*		3	7-5F	R113	
PAHZZ	5905-111-4736	PORM 5%:1/2W; RC20GF161J (81350) RESISTOR, FIXED, COMPOSITION:	R906 160 OHM	EA	REF				*	*	*			7-19	R906	
XDHZZ		PORM 5%:1/2W; RC20GF161J (81350) RESISTOR, FIXED, COMPOSITION:	R117 180 OHM	EA	1				*	*	*			7-9A	R117	
PAHZZ	5905-256-0410	PORM 5%:1/2W; RC20GF181J (81350) RESISTOR, FIXED, COMPOSITION: (SEE... FIG. 7-12A) 180 OHM PORM 10%:1/2W;	R506	EA	1				*	*	*		3		R506	
XDHZZ		PORM 5%:1/2W; RC20GF181K (81350) RESISTOR, FIXED, COMPOSITION:	R725 220 OHM	EA	1				*	*	*			7-19	R725	
PAHZZ	5905-256-0409	PORM 5%:1/2W; RC20GF221J (81350) RESISTOR, FIXED, COMPOSITION: (SEE... FIG. 7-12A) 220 OHM 10%:1/2W;	R509	EA	2				*	*	*		3		R509	
PAHZZ	5905-256-0409	PORM 5%:1/2W; RC20GF221K (81350) RESISTOR, FIXED, COMPOSITION:	R603 220 OHM	EA	REF				*	*	*			7-19	R603	
PAHZZ	5905-279-2593	PORM 5%:1/2W; RC20GF221K (81350) RESISTOR, FIXED, COMPOSITION:	R114 240 OHM	EA	2				*	*	*		3	7-9A	P114	
PAHZZ	5905-279-2593	PORM 5%:1/2W; RC20GF241J (81350) RESISTOR, FIXED, COMPOSITION:	R907 240 OHM	EA	REF				*	*	*			7-19	R907	
PAHZZ	5905-171-2006	PORM 5%:1/2W; RC20GF241J (81350) RESISTOR, FIXED, COMPOSITION:	R120 270 OHM	EA	1				*	*	*		3	7-9A	R120	
XDHZZ		PORM 5%:1/2W; RC20GF271J (81350) RESISTOR, FIXED, COMPOSITION:	R605 270 OHM	EA	1				*	*	*			7-9A	R605	
PAHZZ	5905-299-1965	PORM 10%:1/2W; RC20GF271K (81350) RESISTOR, FIXED, COMPOSITION:	R910 300 OHM	EA	4				*	*	*		3	7-19	R910	
PAHZZ	5905-299-1965	PORM 5%:1/2W; RC20GF301J (81350) RESISTOR, FIXED, COMPOSITION:	R911 300 OHM	EA	REF				*	*	*			7-19	R911	
PAHZZ	5905-299-1965	PORM 5%:1/2W; RC20GF301J (81350) RESISTOR, FIXED, COMPOSITION:	R912 300 OHM	EA	REF				*	*	*			7-19	R912	
PAHZZ	5905-299-1965	PORM 5%:1/2W; RC20GF301J (81350) RESISTOR, FIXED, COMPOSITION:	R913 300 OHM	EA	REF				*	*	*			7-19	R913	
XDHZZ		PORM 5%:1/2W; RC20GF301J (81350) RESISTOR, FIXED, WIRE WOUND:	R130 350 OHM	EA	1				*	*	*			7-14	R130	
PAHZZ	5905-893-5202	PORM 5%:5W; SXAX10HM (80058) RESISTOR, FIXED, WIRE WOUND:	R801 450 OHM	EA	2				*	*	*		3	7-19	R801	
		CONTINUED														

(1) SMR CODE	(2) FEDERAL STOCK NUMBER	(3) DESCRIPTION REFERENCE NUMBER & MFR CODE    USABLE ON CODE		(4) UNIT OF MEAS	(5) QTY INC IN UNIT	(6) 30 DAY DS MAINT ALLOWANCE			(7) 30 DAY GS MAINT ALLOWANCE			(8) 1-YR ALW PER 100 EQUIP CNTGCT	(9) DEPOT MAINT ALW PER 100 EQUIP	(10) ILLUSTRATION		
						(a)	(b)	(c)	(a)	(b)	(c)			(a)	(b)	
						1 20	21 50	51-100	1 20	21 50	51 100			FIGURE NO	ITEM NO	
		CONTINUED														
PAHZZ	5905-893-5205	PORM 5%; 10W; RW31G45 (81349)	RESISTOR, FIXED, WIRE WOUND: R802 450 OHM.	EA	REF				*	*	*			7-17	R802	
PAHZZ	5905-192-3973	PORM 5%; 10W; RW31G45 (81349)	RESISTOR, FIXED, COMPOSITION: R723 (SEE... FIG. 7-12A) 470 OHM PORM 10%; 1/2W;	EA	1				*	*	*		3		R723	
PAHZZ	5905-141-0598	RC20GF471K (81350)	RESISTOR, FIXED, COMPOSITION: R524 (SEE... FIG. 7-12A) 560 OHM PORM 10%; 1/2W;	EA	1				*	*	*		3		R524	
PAHZZ	5905-171-1999	RC20GF561K (81350)	RESISTOR, FIXED, COMPOSITION: R118 820 OHM PORM 5%; 1/2W;	EA	1				*	*	*		3	7-9A	R118	
PAHZZ	5905-116-8569	RC20GF821J (81350)	RESISTOR, FIXED, COMPOSITION: R505 (SEE... FIG. 7-12A) 820 OHM PORM 10%; 1/2W;	EA	1				*	*	*		3		R505	
IXHZZ		RC20GF821K (81350)	RESISTOR, FIXED, COMPOSITION: R507 1100... OHM PORM 10%; 1/2W;	EA	2				*	*	*			7-19	R507	
IXHZZ		RC20GF102K (81350)	RESISTOR, FIXED, COMPOSITION: R722 1100... OHM PORM 10%; 1/2W;	EA	REF				*	*	*			7-19	R722	
PAHZZ	5905-190-8880	RC20GF102K (81350)	RESISTOR, FIXED, COMPOSITION: R128 1200... OHM PORM 5%; 1/2W;	EA	4				*	*	*		3	7-9A	R128	
PAHZZ	5905-190-8880	RC20GF122J (81350)	RESISTOR, FIXED, COMPOSITION: R129 1200... OHM PORM 5%; 1/2W;	EA	REF				*	*	*			7-9A	R129	
PAHZZ	5905-190-8880	RC20GF122J (81350)	RESISTOR, FIXED, COMPOSITION: R712 1200... OHM PORM 5%; 1/2W;	EA	RFF				*	*	*			7-19	R712	
PAHZZ	5905-190-8880	RC20GF122J (81350)	RESISTOR, FIXED, COMPOSITION: R726 1200... OHM PORM 5%; 1/2W;	EA	REF				*	*	*			7-19	R726	
PAHZZ	5905-195-5514	RC20GF122J (81350)	RESISTOR, FIXED, COMPOSITION: R116 1500... OHM PORM 10%; 1/2W;	EA	1				*	*	*		3	7-9A	R116	
PAHZZ	5905-279-2647	RC20GF152K (81350)	RESISTOR, FIXED, COMPOSITION: R541 (SEE... FIG. 7-12A) 1500 OHM PORM 10%; 1/2W;	EA	1				*	*	*		3		R541	
PAHZZ	5905-190-8881	RC32GF152K (81350)	RESISTOR, FIXED, COMPOSITION: R122 1800... OHM PORM 5%; 1/2W;	EA	1				*	*	*		3	7-9A	R122	
PAHZZ	5905-190-8887	RC20GF182J (81350)	RESISTOR, FIXED, COMPOSITION: R124 2000... OHM PORM 5%; 1/2W;	EA	1				*	*	*		3	7-9A	R124	
PAHZZ	5905-256-8355	RC20GF202J (81350)	RESISTOR, FIXED, COMPOSITION: R131 2000... OHM PORM 5%; 2W;	EA	8				*	*	*		3	7-14	R131	
PAHZZ	5905-256-8355	RC42GF202J (81350)	RESISTOR, FIXED, COMPOSITION: R132 2000... CONTINUED	EA	REF				*	*	*			7-14	R132	

SECTION II

TM 11-6625-540-40P

(1) SMR CODE	(2) FEDERAL STOCK NUMBER	(3) DESCRIPTION REFERENCE NUMBER & MFR. CODE USABLE ON CODE		(4) UNIT OF MEAS	(5) QTY INC IN UNIT	(6) 30-DAY DS MAINT ALLOWANCE			(7) 30-DAY GS MAINT ALLOWANCE			(8) 1-YR ALW PER 100 EQUIP CNTG	(9) DEPOT MAINT ALW PER 100 EQUIP	(10) ILLUSTRATION	
						(a)	(b)	(c)	(a)	(b)	(c)			(a)	(b)
						1-20	21-50	51-100	1-20	21-50	51-100			FIGURE NO.	ITEM NO
CONTINUED															
PAHZZ	5905-256-8355	OHM PORM 58:2W; RC42GF202J (81350) RESISTOR, FIXED, COMPOSITION: R133 2000...	EA	REF					*	*	*			7-14	R133
PAHZZ	5905-256-8355	OHM PORM 58:2W; RC42GF202J (81350) RESISTOR, FIXED, COMPOSITION: R134 2000...	EA	REF					*	*	*			7-14	R134
PAHZZ	5905-256-8355	OHM PORM 58:2W; RC42GF202J (81350) RESISTOR, FIXED, COMPOSITION: R135 2000...	EA	REF					*	*	*			7-14	R135
PAHZZ	5905-256-8355	OHM PORM 58:2W; RC42GF202J (81350) RESISTOR, FIXED, COMPOSITION: R136 2000...	EA	REF					*	*	*			7-14	R136
PAHZZ	5905-256-8355	OHM PORM 58:2W; RC42GF202J (81350) RESISTOR, FIXED, COMPOSITION: R137 2000...	EA	REF					*	*	*			7-14	R137
PAHZZ	5905-256-8355	OHM PORM 58:2W; RC42GF202J (81350) RESISTOR, FIXED, COMPOSITION: R138 2000...	EA	REF					*	*	*			7-14	R138
PAHZZ	5905-279-1920	OHM PORM 58:2W; RC42GF202J (81350) RESISTOR, FIXED, COMPOSITION: R515 (SEE... FIG. 7-12A) 2700 OHM PORM 108:2W;	EA	1					*	*	*		3		R515
PAHZZ	5905-141-1130	OHM PORM 58:2W; RC42GF272K (81350) RESISTOR, FIXED, COMPOSITION: R533 (SEE... FIG. 7-12A) 2700 OHM PORM 108:1/2W;F CHARACTERISTIC;	EA	1					*	*	*		3		R533
XDHZZ		RC20GF272K (81350) RESISTOR, FIXED, FILM: R111 3010 OHM PORM. 12:1/4W;	EA	1					*	*	*			7-10	R111
PAHZZ	5905-104-8342	DC1-4 (09250) RESISTOR, FIXED, COMPOSITION: R127 4300...	EA	1					*	*	*		3	7-9A	R127
XDHZZ		OHM PORM 58: RC20GF432J (81350) RESISTOR, FIXED, COMPOSITION: R140 4700...	EA	3					*	*	*			7-9A	R140
XDHZZ		OHM PORM 108:1/2W; RC20GF472K (81350) RESISTOR, FIXED, COMPOSITION: R141 4700...	EA	REF					*	*	*			7-14	R141
XDHZZ		OHM PORM 108:1/2W; RC20GF472K (81350) RESISTOR, FIXED, COMPOSITION: R606 4700...	EA	REF					*	*	*			7-9A	R606
XDHZZ		OHM PORM 108:1/2W; RC20GF472K (81350) RESISTOR, FIXED, COMPOSITION: R520 (SEE... FIG. 7-12A) 4700 OHM PORM 108:1W;	EA	1					*	*	*				R520
XDHZZ		RC32GF472K (81350) RESISTOR, FIXED, WIRE WOUND: R139 5000 OHM PORM 58:5W;	EA	1					*	*	*			7-14	R139
XDHZZ		5XAX10HM (80958) RESISTOR, FIXED, FILM: R701 5084 OHM PORM. 12:1/4W; DC1-4 (09250)	EA	2					*	*	*			7-18	R701

SECTION II

TM 11-6625-540-40P

(1) SMR CODE	(2) FEDERAL STOCK NUMBER	(3) DESCRIPTION REFERENCE NUMBER & MFR CODE    USABLE ON CODE		(4) UNIT OF MEAS	(5) QTY IN UNIT	(6) 30-DAY DS MAINT ALLOWANCE			(7) 30-DAY GS MAINT ALLOWANCE			(8) 1-YR ALW PER 100 EQUIP CNTGCT	(9) DEPOT ALW PER 100 EQUIP	(10) ILLUSTRATION	
						(a)	(b)	(c)	(a)	(b)	(c)			(a)	(b)
						1-20	21-50	51-100	1-20	21-50	51-100			FIGURE NO	ITEM NO
XDHZZ		RESISTOR, FIXED, FILM: R702 5084 OHM PORM. 1X:1/4W; DC1-4 (09250)		EA	REF				*	*	*			7-18	R702
XDHZZ		RESISTOR, FIXED, FILM: R306 5178 OHM PORM. 1X:1/4W; DC1-4 (09250)		EA	1				*	*	*			7-9A	R306
PAHZZ	5905-195-6453	RESISTOR, FIXED, COMPOSITION: R147 5600... OHM PORM 10X:1/2W; RC20GF562K (81350)		EA	2				*	*	*		3	7-9A	R147
PAHZZ	5905-195-6453	RESISTOR, FIXED, COMPOSITION: R503 (FIG 7- 12A); 5600 OHM PORM 10X:1/2W; RC20GF562K (81350)		EA	REF				*	*	*				R503
PAHZZ	5905-245-0023	RESISTOR, FIXED, COMPOSITION: R146 6800... OHM PORM 10X:1/2W; RC20GF682K (81350)		EA	1				*	*	*		3	7-9A	R146
PAHZZ	5905-185-8510	RESISTOR, FIXED, COMPOSITION: R211 10,000. OHM PORM 10X:1/2W; RC20GF103K (81350)		EA	3				*	*	*		3	7-19	R211
PAHZZ	5905-195-8510	RESISTOR, FIXED COMPOSITION: R221 10,000. OHM PORM 10X:1/2 W; RC20GF103K (81350)		EA	REF				*	*	*			7-16	R221
PAHZZ	5905-185-8510	RESISTOR, FIXED COMPOSITION: R805 10,000. OHM PORM 10X:1/2 W; RC20GF103K (81350)		EA	REF				*	*	*			7-9A	R806
PAHZZ	5905-106-9346	RESISTOR, FIXED, COMPOSITION: R516 (SEE... FIG. 7-12A) 10,000 OHM PORM 10X:1W RC32GF103K (81350)		EA	1				*	*	*		3		R516
XDHZZ		RESISTOR, FIXED, FILM: R110 10,120 OHM... PORM 1X:1/4W; DC1-4 (09250)		EA	1				*	*	*			7-11	R110
PAHZZ	5905-279-1972	RESISTOR, FIXED, COMPOSITION: R544 (SEE... FIG. 7-12A) 11,000 OHM PORM 5X:2W; RC42GF113J (81350)		EA	2				*	*	*		3		R544
PAHZZ	5905-279-1972	RESISTOR, FIXED, COMPOSITION: R545 11,000. OHM PORM 5X: 2W; (See Figure 7-12A) RC42GF113J (81350)		EA	REF				*	*	*				R545
PAHZZ	5905-110-0993	RESISTOR, FIXED, COMPOSITION: R711 12,000. OHM PORM 10X:1/2W; RC20GF123K (81350)		EA	3				*	*	*		3	7-18	R711
PAHZZ	5905-110-0993	RESISTOR, FIXED, COMPOSITION: R716 12,000. OHM PORM 10X:1/2W (See Figure 7-12A) RC20GF123K (81350)		EA	REF				*	*	*				R716
PAHZZ	5905-110-0993	RESISTOR, FIXED, COMPOSITION: R720 12,000. OHM PORM 10X:1/2 W; (See Figure 7-12A) RC20GF123K (81350)		EA	REF				*	*	*				R720
XDHZZ		RESISTOR, FIXED, COMPOSITION: R528 15,000. OHM PORM 10X:1W; RC32GF153K (81350)		EA	1				*	*	*			7-19	R528
PAHZZ	5905-935-8545	RESISTOR, FIXED, COMPOSITION: R404 18,000. OHM PORM 5X:1/2W; RC20GF183J (81350)		EA	2				*	*	*		3	7-9A	R404
PAHZZ	5905-935-8545	RESISTOR, FIXED, COMPOSITION: R407 18,000.		EA	REF				*	*	*			7-9A	R407

CONTINUED



## SECTION II

TM 11-6625-540-40P

(1) SMR CODE	(2) FEDERAL - STOCK NUMBER	(3) DESCRIPTION REFERENCE NUMBER & MFR. CODE      USABLE ON CODE		(4) UNIT OF MEAS	(5) QTY INC IN UNIT	(6) 30-DAY DS MAINT ALLOWANCE			(7) 30-DAY CS MAINT ALLOWANCE			(8) 1-YR ALW PER 100 EQUIP CHTGCY	(9) DEPOT MAINT ALW PER 100 EQUIP	(10) ILLUSTRATION		
						(a)	(b)	(c)	(a)	(b)	(c)			(a)	(b)	
						1-20	21-59	51-100	1-20	21-50	51-100			FIGURE NO	ITEM NO	
		CONTINUED														
PAHZZ	5905-190-8879	0HM PORM 5%; 1/2 W; RC20GF183J (81350)	R539 10,000.	EA	1				*	*	*		3	7-19	R539	
XDHZZ		RESISTOR, FIXED, COMPOSITION: 0HM PORM 10%; 1/2W; RC20GF183K (81350)	R523 (SEE...)	EA	1				*	*	*				R523	
PAHZZ	5905-249-4225	RESISTOR, FIXED, COMPOSITION: FIG. 7-12A) 10,000 OHM PORM 10%; 1W; RC32GF183K (81350)	R543 (SEE...)	EA	1				*	*	*		3		R543	
PAHZZ	5905-106-1282	RESISTOR, FIXED, COMPOSITION: RC42GF183K (81350)	R214 22,000.	EA	1				*	*	*		3	7-16	R214	
PAHZZ	5905-279-2527	RESISTOR, FIXED, COMPOSITION: FIG. 7-12A) 32,000 OHM PORM 10%; 2W; RC42GF223K (81350)	R542 (SEE...)	EA	1				*	*	*		3		R542	
PAHZZ	5905-195-6758	RESISTOR, FIXED, COMPOSITION: OHM PORM 10%; 1/2W; RC20GF223K (81350)	R212 27,000.	EA	1				*	*	*		3	7-16	R212	
XDHZZ		RESISTOR, FIXED, FILM: PORM 1%; 1/4W; DC1-4 (09250)	R109 31,000 OHM....	EA	1				*	*	*			7-19	R109	
PAHZZ	5905-102-2740	RESISTOR, FIXED, COMPOSITION: OHM PORM 10%; 1/2W; RC32GF333K (81350)	R804 33,000.	EA	2				*	*	*		3	7-15	R804	
PAHZZ	5905-102-2740	RESISTOR, FIXED, COMPOSITION: OHM PORM 10%; 1/2 W; RC32CF333K (81350)	R805 33,000.	EA	REF				*	*	*		*	7-15	R805	
PAHZZ	5905-190-8873	RESISTOR, FIXED, COMPOSITION: OHM PORM 10%; 2W; RC42GF473K (81350)	R148 47,000.	EA	1				*	*	*		3	7-10	R148	
XDHZZ		RESISTOR, FIXED, FILM: PORM 1%; 1/4W; DC1-4 (09250)	R703 53,560 OHM....	EA	2				*	*	*			7-18	R703	
XDHZZ		RESISTOR, FIXED, FILM: PORM 1%; 1/4 W; DC1-4 (09250)	R704 53,560 OHM....	EA	REF				*	*	*			7-18	R704	
XDHZZ		RESISTOR, FIXED, FILM: PORM 1%; 1/4W; DC1-4 (09250)	R901 68,000 OHM....	EA	2				*	*	*			7-25	R901	
XDHZZ		RESISTOR, FIXED, FILM: PORM 1%; 1/4 W; DC1-4 (09250)	R902 68,000 OHM....	EA	REF				*	*	*			7-19	R902	
PAHZZ	5905-114-5489	RESISTOR, FIXED, COMPOSITION: OHM PORM 10%; 1/2W; RC20GF823K (81350)	R203 82,000.	EA	6				*	*	*		3	7-9A	R203	
PAHZZ	5905-114-5489	RESISTOR, FIXED, COMPOSITION: OHM PORM 10%; 1/2 W; RC20GF823K (81350)	R204 82,000.	EA	REF				*	*	*			7-9A	R204	
PAHZZ	5905-114-5489	RESISTOR, FIXED, COMPOSITION: CONTINUED	R205 82,000.	EA	REF				*	*	*			7-9A	R205	

## SECTION II

TM11-6625-540-40P

(1) SMR CODE	(2) FEDERAL STOCK NUMBER	(3) DESCRIPTION REFERENCE NUMBER & MFR CODE USABLE ON CODE	(4) UNIT OF MEAS	(5) QTY INC IN UNIT	(6) 30 DAY DS MAINT ALLOWANCE			(7) 30 DAY CS MAINT ALLOWANCE			(8) 1 YR ALWPER 100 EQUIP CNTGCV	(9) DEPOT MAINT ALWPER 100 EQUIP	(10) ILLUSTRATION	
					(a)	(b)	(c)	(a)	(b)	(c)			(a)	(b)
					1 20	21 50	51 100	1 20	21 50	51 100			FIGURE NO	ITEM NO
		CONTINUED												
PAHZZ	5905-114-5489	OHM PORM 10%; 1/2 W; RC20GF823K (81350) RESISTOR, FIXED, COMPOSITION: R206 82,000.	EA	REF				*	*	*			7-9A	R206
PAHZZ	5905-114-5489	OHM PORM 10%; 1/2 W; RC20GF823K (81350) RESISTOR, FIXED, COMPOSITION: R207 82,000.	EA	REF				*	*	*			7-9A	R207
PAHZZ	5905-114-5489	OHM PORM 10%; 1/2 W; RC20GF823K (81350) RESISTOR, FIXED, COMPOSITION: R209 82,000.	EA	REF				*	*	*				R209
PAHZZ	5905-116-8570	OHM PORM 10%; 1/2W (See Figure 7-12A) RC290GF823K (81350) RESISTOR, FIXED, COMPOSITION: R604 9100...	EA	1				*	*	*		3	7-9A	R604
PAHZZ	5905-254-7100	OHM PORM 5%; 1/2W; RC20GF912J (81350) RESISTOR, FIXED, COMPOSITION: R540 (SEE...	EA	1				*	*	*		3		R540
PAHZZ	5905-195-6761	FIG. 7-12A) 91,000 OHM PORM 10% 1/2W; RC20GF183K (81350) RESISTOR, FIXED, COMPOSITION: R547 100,000	EA	1				*	*	*		3	7-19	R547
PAHZZ	5905-192-3987	OHM PORM 5%; 1/2W; RC20GF104J (81350) RESISTOR, FIXED, COMPOSITION: R218 100,000	EA	6				*	*	*		3	7-16	R218
PAHZZ	5905-192-3987	OHM PORM 10%; 1/2W; RC20GF104K (81350) RESISTOR, FIXED, COMPOSITION: R511 100,000	EA	REF				*	*	*				R511
PAHZZ	5905-192-3987	OHM PORM 10%; 1/2 W; (See Figure 7-12A) RC20GF104K (81350) RESISTOR, FIXED, COMPOSITION: R526 100,000	EA	REF				*	*	*				R526
PAHZZ	5905-192-3987	OHM PORM 10%; 1/2W; (See Figure 7-12A) RC20GF104K (81350) RESISTOR, FIXED, COMPOSITION: R536 100,000	EA	REF				*	*	*				R536
PAHZZ	5905-192-3987	OHM PORM 10%; 1/2 W; (See Figure 7-12A) RC20GF104K (81350) RESISTOR, FIXED, COMPOSITION: R719 100,000	EA	REF				*	*	*				R719
PAHZZ	5905-192-3987	OHM PORM 10%; 1/2 W; (See Figure 7-12A) RC20GF104K (81350) RESISTOR, FIXED, COMPOSITION: R807 100,000	EA	REF				*	*	*			7-9A	R807
PAHZZ	5905-299-2004	OHM PORM 10%; 1W; RC20GF104K (81350) RESISTOR, FIXED, COMPOSITION: R202 100,000	EA	1				*	*	*		3	7-13	R202
XIHZZ		OHM PORM 1%; 1/4W; RC32GF104K (81350) RESISTOR, FIXED, FILM: R108 112,800 OHM...	EA	1				*	*	*			7-11	R108
PAHZZ	5905-192-3981	DCI-4 (09250) RESISTOR, FIXED, COMPOSITION: R721 (SEE... FIG. 7-12A) 120,000 OHM PORM 10%; 1/2W;	EA	1				*	*	*		3		R721
PAHZZ	5905-279-2522	RC20GF124K (81350) RESISTOR, FIXED, COMPOSITION: R532 150,000	EA	1				*	*	*		3		R532
PAHZZ	5905-192-9260	OHM PORM 5%; 1/2W; (See Figure 7-12A) RC20GF154J (81350) RESISTOR, FIXED, COMPOSITION: R538 (SEE...	EA	1				*	*	*		3		R538
		CONTINUED												

SECTION II

TM 11-6625-540-40P

(1) SMR CODE	(2) FEDERAL STOCK NUMBER	(3) DESCRIPTION REFERENCE NUMBER & MFR. CODE USABLE OH CODE		(4) UNIT OF MEAS	(5) QTY INC IN UNIT	(6) 30 DAY DS MAINT ALLOWANCE			(7) 30-DAY GS MAINT ALLOWANCE			(8) 1-YR ALW PER 100 EQUIP CNTGCT	(9) DEPOT MAINT ALW PER 100 EQUIP	(10) ILLUSTRATION		
						(a)	(b)	(c)	(a)	(b)	(c)			(a)	(b)	
						1-20	21-50	51-100	1-20	21-50	51-100			FIGURE NO	ITEM NO	
		CONTINUED														
XIHZZ		FIG. 7-12A) 150,000 OHM PORM 108;1/2W; RC20GF194K (81350)		EA	2				*	*	*			7-18	R705	
XIHZZ		RESISTOR, FIXED, FILM: R705 160,500 OHM... PORM 18; 1/4W; DC1-4 (09290)		EA	REF				*	*	*			7-18	R706	
PAHZZ	5905-192-0667	RESISTOR, FIXED, COMPOSITION: R903 220,000 OHM PORM 108;1/2W; RC20GF224K (81350)		EA	1				*	*	*		3	7-25	R903	
PAHZZ	5905-114-5416	RESISTOR, FIXED, COMPOSITION: R521 (SEE... FIG. 7-12A) 270,000 OHM PORM 108;1/2W; RC20GF274K (81350)		EA	1				*	*	*		3		R521	
FAHZZ	5905-283-7837	RESISTOR, FIXED, FILM: R107 313,000 OHM... PORM 18; 1/4W; DC1-4 (09290)		EA	4				*	*	*		3	7-11	R107	
PAHZZ	5905-283-7837	RESISTOR, FIXED, FILM: R302 313,000 OHM... PORM 18; 1/4 W; DC1-4 (09290)		EA	REF				*	*	*			7-9A	R302	
PAHZZ	5905-283-7837	RESISTOR, FIXED, FILM: R303 313,000 OHM... PORM 18; 1/4 W; DC1-4 (09290)		EA	REF				*	*	*			7-9A	R303	
PAHZZ	5905-283-7837	RESISTOR, FIXED, FILM: R305 313,000 OHM... PORM 18; 1/4 W; DC1-4 (09290)		EA	REF				*	*	*			7-9A	R305	
PAHZZ	5905-283-7839	RESISTOR, FIXED, FILM: R707 314,400 OHM... PORM 18; 1/4W; DC1-4 (09290)		EA	2				*	*	*		3	7-18	R707	
PAHZZ	5905-283-7839	RESISTOR, FIXED, FILM: R708 314,400 OHM... PORM 18; 1/4 W; DC1-4 (09290)		EA	REF				*	*	*			7-18	R708	
PAHZZ	5905-104-8346	RESISTOR, FIXED, COMPOSITION: R531 330,000 OHM PORM 58;1/2W; RC20GF334J (81350)		EA	1				*	*	*		3	7-19	R531	
PAHZZ	5905-114-5420	RESISTOR, FIXED, COMPOSITION: R403 390,000 OHM PORM 108;1/2W; RC20GF394K (81350)		EA	1				*	*	*		3	7-9A	R403	
PAHZZ	5905-185-6946	RESISTOR, FIXED, COMPOSITION: R301 (SEE... FIG. 7-12A) 470,000 OHM PORM 108;1/2W; RC20GF474K (80058)		EA	1				*	*	*		3		R301	
PAHZZ	5905-111-4840	RESISTOR, FIXED, COMPOSITION: R512 (SEE... FIG. 7-12A) 510,000 OHM PORM 58;1/2W; RC20GF514J (81350)		EA	1				*	*	*		3		R512	
PAHZZ	5905-279-2514	RESISTOR, FIXED, COMPOSITION: R125 560,000 OHM PORM 108;1/4W; RC20GF564K (81350)		EA	3				*	*	*		3	7-9A	R125	
PAHZZ	5905-279-2514	RESISTOR, FIXED, COMPOSITION: R126 560,000 OHM PORM 108; 1/4 W; RC20GF564K (81350)		EA	REF				*	*	*			7-9A	R126	
PAHZZ	5905-279-2514	RESISTOR, FIXED, COMPOSITION: R401 560,000 OHM PORM 108; 1/4 W; RC20GF564K (81350)		EA	REF				*	*	*			7-9A	R401	
		CONTINUED														

SECTION II

TM 11-6625-540-40P

(1) SMR CODE	(2) FEDERAL STOCK NUMBER	(3) DESCRIPTION REFERENCE NUMBER & MFR CODE    USABLE ON CODE		(4) UNIT OF MEAS	(5) QTY INC IN UNIT	(6) 30-DAY DS MAINT ALLOWANCE			(7) 30-DAY GS MAINT ALLOWANCE			(8) 1-YR ALW PER 100 EQUIP CNTGCT	(9) DEPOT ALW PER 100 EQUIP	(10) ILLUSTRATION	
						(a)	(b)	(c)	(a)	(b)	(c)			(a)	(b)
						1-20	21-50	51-100	1-20	21-50	51-100			FIGURE NO	ITEM NO
		CONTINUED													
XIHZZ		OHM PORM 10%; 1/4 W; RC20GF56-X (81350)		EA	1				*	*	*			7-24	R909
XIHZZ		RESISTOR, FIXED, FILM: R909 666,700 OHM... PORM 1%; 1/2W; DC1 (09250)		EA	1				*	*	*			7-11	R101
PAHZZ	5905-111-6010	RESISTOR, FIXED, COMPOSITION: R216 910,000 OHM PORM 5%; 1/2W; RC20GF914J (81350)		EA	1				*	*	*	3		7-16	R216
PAHZZ	5905-865-7842	RESISTOR, VARIABLE, COMPOSITION: R519 1... SECT: 1 MEGOHM PORM 20%; 1W; 6 INEAR TAPER: 15/16" DIA X 29/32"D; RV2MAY5B105AM1L (81349)		EA	2				*	*	*	3		7-13	R519
PAHZZ	5905-865-7842	RESISTOR, VARIABLE: R724 (SEE FIG. 7-12A) 1 SECT: 1 MEGOHM PORM 20%; 1W; 6 INEAR TAPER: 15/16" DIA X 29/32"D; YSB105AM1L81349 (RV2MA)		EA	REF				*	*	*				R724
PAHZZ	5905-549-9503	RESISTOR, VARIABLE, COMPOSITION: R601..... COMPOSITION ELEMENT: 1 SECT: 3.5 MEGOHM PORM 10%; 1/4W; REVERSE C TAPER 15/16" DIA X 0.451"D; GC45 (80058)		EA	1				*	*	*	3		7-19	R601
PAHZZ	5905-636-6307	RESISTOR, VARIABLE, COMPOSITION: R530 1... SECT: 5 MEGOHMS PORM 30%; 1W; 90 (80058)		EA	1				*	*	*	3		7-13	R530
PAHZZ	5905-577-7136	RESISTOR, VARIABLE: R115A, B 2 SECT: 1 W EA SECT: 1000 OHMS 1ST SECTION; 10,000 OHMS 2ND SECTION; 2" X 15/16" DIA O/A C2-90 (80058)		EA	1				*	*	*	3		7-9A	R115
PAHZZ	5905-646-5957	RESISTOR, VARIABLE, COMPOSITION: R529 (SEE FIG. 7-12A) 1 SECT 10,000 OHMS PORM 20%; 1W; MT90 (80058)		EA	1				*	*	*	3			R529
PAHZZ	5905-259-3740	RESISTOR, VARIABLE: R502 25,000 OHMS PORM 20%; 1 SECT: 1/2W; 21/32" LG X 3/4" H X 23/64" W; 65 (80058)		EA	1				*	*	*	3		7-19	R502
PAHZZ	5905-258-3925	RESISTOR, VARIABLE: R210 (SEE FIG. 7-12A) 1 SECT, 50,000 OHMS PORM 20%; 1W; 90 (80058)		EA	1				*	*	*	3			R210
PAHZZ	5905-577-1821	RESISTOR, VARIABLE: R534A, B 2 SECT: 50,000 OHMS 1ST SECT, 10,000 OHMS 2ND SECT: 1W; PORM 20%; EA SECT; 01064600 (80058)		EA	1				*	*	*	3		7-19	R534
PAHZZ	5905-556-3042	RESISTOR, VARIABLE, COMPOSITION: R402 1... SECT: 100,000 OHM PORM 20%; 1W; MT90 (80058)		EA	2				*	*	*	3		7-9A	R402
PAHZZ	5905-556-3042	RESISTOR, VARIABLE, COMPOSITION: R510 1... SECT: 100,000 OHM PORM 20%; 1 W; MT90 (80058)		EA	REF				*	*	*			7-13	R510

SECTION II

TM 11-6625-540-40P

(1) SMR CODE	(2) FEDERAL STOCK NUMBER	(3) DESCRIPTION REFERENCE NUMBER & MFR. CODE USABLE ON CODE	(4) UNIT OF MEAS	(5) QTY INC IN UNIT	(6) 30-DAY DS MAINT ALLOWANCE			(7) 30-DAY GS MAINT ALLOWANCE			(8) 1-YR ALW PER 100 EQUIP CNTGCY	(9) DEPOT MAINT ALW PER 100 EQUIP	(10) ILLUSTRATION	
					(a)	(b)	(c)	(a)	(b)	(c)			(a)	(b)
					1-20	21-50	51-100	1-20	21-50	51-100			FIGURE NO	ITEM NO
PAHZZ	5905-258-3931	RESISTOR, VARIABLE: R208 (SEE FIG. 7-12A) 1 SECT; 250,000 OHMS PORM 20%; 1W; 90 (80058)	EA	1				*	*	*		3		R208
XDHZZ		SCALE, CATHODE RAY TUBE: 0203 1 SCALE; 11 VERTICAL LINES, 21 HORIZONTAL LINES, TYPE AEM-3 PLASTIC SCALE; 2-29/32" LG X 2-3/16" W X 1/8 THK; 45004681 (80058)	EA	1				*	*	*				0203
PAHZZ	5960-860-7710	SHIELD, ELECTRON TUBE: 0Y601 BRASS..... NICKEL PLATED; 1-15/16" LG X 1.065" OD X 0.950" ID; 19/32" DIA HOLE ON TOP; TS103002 (12992)	EA	1				*	*	*		10		
PAHZZ	5935-280-2782	SOCKET, ELECTRON TUBE: XV201 12 CONT..... BERYLLIUM COPPER, CONT 5 AND 11 MISSING; PHENOLIC BODY 1-3/8" IN DIA X 1/2" IN D; 34003800 (80058)	EA	1				*	*	*		3	7-15	
PAHZZ	5935-260-0516	SOCKET, ELECTRON TUBE: XV101.....	EA	11				*	*	*		3	7-6	
PAHZZ	5935-260-0516	TS102P01 (81350) SOCKET, ELECTRON TUBE: XV102.....	EA	REF				*	*	*			7-9C	
PAHZZ	5935-260-0516	TS102P01 (81350) SOCKET, ELECTRON TUBE: XV103.....	EA	REF				*	*	*			7-9C	
PAHZZ	5935-260-0516	TS102P01 (81350) SOCKET, ELECTRON TUBE: XV104.....	EA	REF				*	*	*			7-8	
PAHZZ	5935-260-0516	TS102P01 (81350) SOCKET, ELECTRON TUBE: XV105.....	EA	REF				*	*	*			7-8	
PAHZZ	5935-260-0516	TS102P01 (81350) SOCKET, ELECTRON TUBE: XV202.....	EA	REF				*	*	*			7-8	
PAHZZ	5935-260-0516	TS102P01 (81350) SOCKET, ELECTRON TUBE: XV301.....	EA	REF				*	*	*			7-6	
PAHZZ	5935-260-0516	TS102P01 (81350) SOCKET, ELECTRON TUBE: XV402.....	EA	REF				*	*	*			7-9C	
PAHZZ	5935-260-0516	TS102P01 (81350) SOCKET, ELECTRON TUBE: XV504 (SEE FIG. 7- 12C)	EA	REF				*	*	*				
PAHZZ	5935-260-0516	TS102P01 (81350) SOCKET, ELECTRON TUBE: XV506.....	EA	REF				*	*	*			7-17	
PAHZZ	5935-260-0516	TS102P01 (81350) SOCKET, ELECTRON TUBE: XV507.....	EA	REF				*	*	*			7-17	
PAHZZ	5935-193-7854	TS102P01 (81350) SOCKET, ELECTRON TUBE: XV801 7 PIN..... MINIATURE HIGH VOLTAGE TYPE; 1-15/16" IN LG X 1" IN W X 1-5/32" IN D; 8290 (00629)	EA	1				*	*	*		3	7-8	
PAHZZ	5935-051-1803	SOCKET, ELECTRON TUBE: XV901 7 PIN..... MINIATURE; 0.450 IN LG X 0.281 IN H X 0.218 IN W; EA 11957 (71785)	EA	1				*	*	*		3		
PAHZZ	5935-201-5979	SOCKET, ELECTRON TUBE: XV802 7 PIN..... MINIATURE; REQUIRES 5/8 IN CLEARANCE HOLE IN CHASSIS; 14700 (71785)	EA	2				*	*	*		3	7-8	
PAHZZ	5935-201-5979	SOCKET, ELECTRON TUBE: XV803 7 PIN.....	EA	REF				*	*	*			7-8	

SECTION II

TM 11-6625-540-40P

(1) SMR CODE	(2) FEDERAL STOCK NUMBER	(3) DESCRIPTION REFERENCE NUMBER & MFR CODE USABLE ON CODE	(4) UNIT OF MEAS	(5) Q1 / INC IN UNIT	(6) 30-DAY PS MAINT ALLOWANCE			(7) 30-DAY GS MAINT ALLOWANCE			(8) 1 YR ALW PER 100 EQUIP CNTGCT	(9) DEPOT MAINT ALW PER 100 EQUIP	(10) ILLUSTRATION	
					(a)	(b)	(c)	(a)	(b)	(c)			(a)	(b)
					1-20	21-50	51-100	1-20	21-50	51-100			FIGURE NO	ITEM NO
		CONTINUED												
XDHZZ		MINIATURE; REQUIRES 5/8 IN CLEARANCE HOLE IN CHASSIS; 14700 (71785)												
XDHZZ		SOCKET, ELECTRON TUBE: XV203.....	EA	9				*	*	*			7-8	
XDHZZ		TS103P01 (81350)												
XDHZZ		SOCKET, ELECTRON TUBE: XV401.....	EA	REF				*	*	*			7-9C	
XDHZZ		TS103P01 (81350)												
XDHZZ		SOCKET, ELECTRON TUBE: XV501 (SEE FIG. 7-12C)	EA	REF				*	*	*				
XDHZZ		TS103P01 (81350)												
XDHZZ		SOCKET, ELECTRON TUBE: XV502 (SEE FIG. 7-12C)	EA	REF				*	*	*				
XDHZZ		TS103P01 (81350)												
XDHZZ		SOCKET, ELECTRON TUBE: XV503 (SEE FIG. 7-12C)	EA	REF				*	*	*				
XDHZZ		TS103P01 (81350)												
XDHZZ		SOCKET, ELECTRON TUBE: XV505 (SEE FIG. 7-12C)	EA	REF				*	*	*				
XDHZZ		TS103P01 (81350)												
XDHZZ		SOCKET, ELECTRON TUBE: XV601.....	EA	REF				*	*	*			7-9C	
XDHZZ		TS103P01 (81350)												
XDHZZ		SOCKET, ELECTRON TUBE: XV701.....	EA	REF				*	*	*			7-7	
XDHZZ		TS103P01 (81350)												
XDHZZ		SOCKET, ELECTRON TUBE: XV702 (SEE FIG 7-12C)	EA	REF				*	*	*				
XDHZZ		TS103P01 (81350)												
XDHZZ		SWITCH, ROTARY: S701 (SEE FIG. 7-12C) 4. SECT, 6 POS; NON-PILE-UP TYPE 4 POLE 6 POS EACH SECT; 2-11/32" LG X 1-5/16" H X 1-1/4" W; 05005732 (80058)	EA	1				*	*	*				S701
PAMZZ	5930-327-7839	SWITCH, ROTARY: S501 2 SECT, 9 POS EA..... SECT; NON-PILE-UP TYPE; 2 POLE, 9 POS EA SECT; 1-13/32" LG X 1-5/16" H X 1-1/4" W; 05005745 (80058)	EA	1				*	*	*			7-19	S501
PAMZZ	5930-327-7837	SWITCH, ROTARY: S502 (SEE FIG. 7-12C) 2. SECT, 5 POS, EA SECT; NON-PILE-UP TYPE; 2-1/4" LG X 1-5/16" H X 1-1/4" W; 05005754 (80058)	EA	1				*	*	*		5		S502
PAMZZ	5930-548-6558	SWITCH, ROTARY: S102 SPST; 1 SECT; 2..... POS; 12" LG X 1-1/2" H X 7/8" W; 05005801 (80058)	EA	1				*	*	*		5	7-15	S102
PAMZZ	5930-296-4521	SWITCH, ROTARY: S101 3 SECT; 7 POS, 7.... THROWS 2-15/16 LG X 1-1/4 W X 1-15/16H 05005722 (80058)	EA	1				*	*	*		5	7-19	S101
PAMZZ	5930-646-4619	SWITCH, SENSITIVE, S103..... SPST; 125/250V AC, 5 AMP; 30V DC, 2 AMP AT SEA LEVEL, 25/32" LG X 1/4" W X 23/64" H EXCEL TERM; 1SM1 (91929)	EA	1				*	*	*		5	7-9C	S103
PAMZZ	5930-655-1508	SWITCH, TOGGLE, OPDT: S801 (SEE FIG. 7-... 12C) OPDT; 5 AMP AT 125V AC, PHENOLIC BODY. CONTINUED	EA	1				*	*	*		5		S801

SECTION II

TM 11-6625-540-40P

(1) SMR CODE	(2) FEDERAL STOCK NUMBER	(3) DESCRIPTION REFERENCE NUMBER & MFR. CODE    USABLE ON CODE	(4) UNIT OF MEAS	(5) QTY INC IN UNIT	(6) 30-DAY DS MAINT ALLOWANCE			(7) 30-DAY GS MAINT ALLOWANCE			(8) 1 YR ALW PER 100 EQUIP CMT	(9) DEPOT MAINT ALW PER 100 EQUIP	(10) ILLUSTRATION	
					(a)	(b)	(c)	(a)	(b)	(c)			(a)	(b)
					1-20	21-50	51-100	1-20	21-50	51-100			FIGURE NO	ITEM NO
PAHZZ	5950-646-3899	CONTINUED 23/32" X 9/32" X 31/32" LG; ST23N (81350) TRANSFORMER, POWER, STEP-UP AND STEP-DOWN:.. T801 (SEE FIG. 7-12C) 115V AC, 50/1000 CPS; SINGLE PH; 3 OUTPUT WNDGS; 3-15/16" LG X 3-1/8" W X 3-5/16" H O/A; 20007101 (80058)	EA	1				*	*	*		3		T801
PAHZZ	5950-645-5554	TRANSFORMER, PULSE: T601 BLOCKING..... OSCILLATOR TYPE: 60 TO 6000 CPS; 2.4 OHMS PRI; 3.4 OHMS SECONDARY; 310V OPER; MS METAL CASE, 0.940" LG X 0.680" W X 29/32" H EXCL TERM; 20007112 (80058)	EA	1				*	*	*		3	7-98	T...

INDEX-FEDERAL STOCK NUMBER AND REFERENCE NUMBER  
CROSS-REFERENCE TO FIGURE NUMBER AND ITEM NUMBER

STOCK NUMBER	FIGURE NO.	ITEM NO.	STOCK NUMBER	FIGURE NO.	ITEM NO.
			5905-192-3981		R721
			5905-192-3987		R511
			5905-192-3987		R526
			5905-192-3987		R536
5355-567-8586		A501	5905-192-3987		R719
			5905-192-3987	7-16	R218
5355-644-4128		A101	5905-192-3987	7-9A	R807
			5905-192-9260		R538
			5905-195-5514	7-9A	R116
5905-096-6982			5905-195-6453		R503
5905-102-2740	7-15	R804	5905-195-6453	7-9A	R147
5905-102-2740	7-15	R805	5905-195-6758	7-16	R212
			5905-195-6761	7-19	R547
		R715			
5905-104-5756		R142			
5905-104-8332	7-15	R127			
5905-104-8342	7-9A	R531			
5905-104-8346	7-19	R214	5905-245-0023	7-9A.	R146
5905-106-1282	7-16	R144	5905-249-4225		R543
5905-106-9344	7-14	R145	5905-252-1046	7-16	R219
5905-106-9344	7-19	R516	5905-252-1046	7-16	R220
5905-106-9346		R501	5905-252-1046	7-19	R527
5905-106-9347		R307	5905-254-7100		R540
5905-106-9347	7-9A	R716	5905-256-0409		R509
5905-110-0993		R720	5905-256-0409	7-19	R603
5905-110-0993		R711	5905-256-0410		R506
5905-110-0993	7-18	R504	5905-256-8355	7-14	R131
5905-111-4732		R508	5905-256-8355	7-14	R132
5905-111-4732		R522	5905-256-8355	7-14	R133
5905-111-4732		R717	5905-256-8355	7-14	R134
5905-111-4732	7-19	R119	5905-256-8355	7-14	R135
5905-111-4736	7-19	R113	5905-256-8355	7-14	R136
5905-111-4736	7-19	R906	5905-256-8355	7-14	R137
5905-111-4740		R517	5905-256-8355	7-14	R138
5905-111-4740		R714	5905-258-3925		R210
5905-111-4740	7-9A	R408	5905-258-3931		R208
5905-111-4840		R512			
5905-111-6010	7-16	R216	5905-259-3740	7-19	R502
5905-114-5388	7-19	R803	5905-279-1754	7-16	R213
5905-114-5398	7-9A	R405	5905-279-1754	7-16	R215
5905-114-5398	7-9A	R406	5905-279-1754	7-19	R546
5905-114-5416		R521	5905-279-1866	7-19	R143
5905-114-5428	7-9A	R403	5905-279-1868		R718
5905-114-5489		R205	5905-279-1892		R513
5905-114-5489	7-9A	R203	5905-279-1892	7-12	R525
5905-114-5489	7-9A	R204	5905-279-1920		R515
5905-114-5489	7-9A	R205			
5905-114-5489	7-9A	R206	5905-279-1972		R544
5905-114-5489	7-9A	R207	5905-279-1972		R545
5905-116-8569		R305	5905-279-2514	7-9A	R125
5905-116-8570	7-9A	R604	5905-279-2514	7-9A	R126
5905-141-0598		R524	5905-279-2514	7-9A	R401
5905-141-1130		R533	5905-279-2522		R532
			5905-279-2527		R542
5905-171-1999	7-9A	R118	5905-279-2593	7-19	R907
5905-171-2006	7-9A	R120	5905-279-2593	7-9A	R114
			5905-279-2647		R541
5905-185-6946		R301	5905-283-6687	7-18	R709
5905-185-8490	7-19	R112	5905-283-6687	7-18	R710
5905-185-8490	7-19	R905			
5905-185-8510	7-16	R221			
5905-185-8510	7-19	R211	5905-283-7837	7-11	R107
5905-185-8510	7-9A	R806	5905-283-7837	7-9A	R302
5905-190-8873	7-16	R148	5905-283-7837	7-9A	R303
5905-190-8879	7-19	R539	5905-283-7837	7-9A	R305
5905-190-8880	7-19	R712	5905-283-7839	7-18	R707
5905-190-8880	7-19	R726	5905-283-7839	7-18	R708
5905-190-8880	7-9A	A128			
5905-190-8880	7-9A	R129			
5905-190-8881	7-9A	R122			
5905-190-8887	7-9A	R124			
5905-192-0390		R518			
5905-192-0390		R217			
5905-192-0390	7-16	R304			
5905-192-0667	7-9A	R903	5905-299-1965	7-19	R910
5905-192-3973	7-25	R723	5905-299-1965	7-19	R911



SECTION IV

TM 11-6625-540-40P

STOCK NUMBER	FIGURE NO.	ITEM NO.	STOCK NUMBER	FIGURE NO.	ITEM NO.
5905-299-1965	7-19	R912	5910-669-3423	7-19	C501
5905-299-1965	7-19	R913	5910-669-3423	7-9B	C115
5905-299-2004	7-13	R202	5910-669-3423	7-9B	C120
			5910-681-9189		C502
5905-435-6560	7-9A	R409	5910-681-9189		C504
			5910-681-9189		C518
			5910-681-9189	7-9B	C714
			5910-681-9189		C402
			5910-702-3768	7-19	C521
			5910-762-2945		C505
			5910-820-5352	7-9B	C301
			5910-850-0540	7-16	C204
			5910-850-0540	7-16	C206
5905-549-9503	7-19	R601	5910-850-0540	7-9B	C122
5905-556-3042	7-13	R510	5910-850-9066		C506
5905-556-3042	7-9A	R402	5910-851-9258	7-19	C515
5905-577-1821	7-19	H334	5910-854-6853	7-9A	C802
5905-577-7136	7-9A	R115			
5905-636-6307	7-13	R530	5910-899-2538		C711
5905-646-5957		R529	5910-938-1013	7-19	C106
			5910-938-1013	7-19	C701
5905-865-7842		R724	5910-943-9277	7-9A	C401
5905-865-7842		R519	5915-501-3372	7-19	Z801
5905-893-5202	7-13	R802	5915-627-8044		
5905-893-5202	7-17	R801	5920-280-4960	7-19	F801
5905-935-8545	7-19	R406	5920-280-4960	7-19	F802
5905-935-8545	7-9A	R407	5930-296-4521	7-19	S101
5910-018-1652	7-18	C707	5930-327-7837		S502
			5930-327-7839	7-19	S501
			5930-548-6558	7-15	S102
5910-276-6815	7-25	C902	5930-646-4619	7-9C	S103
			5930-655-1508		S801
			5935-051-1803		
			5935-193-7854	7-8	
			5935-201-5979	7-8	
			5935-258-9961	7-19	J802
			5935-259-3607	7-12	P803
			5935-260-0516		
			5935-260-0516	7-17	
			5935-260-0516	7-6	
			5935-260-0516	7-8	
			5935-260-0516	7-9C	
			5935-280-2782	7-15	
5910-543-0833	7-19	C702	5935-549-2645	7-17	P802
5910-617-4114	7-9B	C602	5935-665-6544	7-19	E901
			5935-665-6544	7-19	E902
			5935-683-2464	7-9C	J103
			5935-843-7362		
			5935-850-9157	7-19	P902
5910-636-4271	7-2	C517	5935-850-9157	7-19	P903
5910-636-4271	7-3	C704	5935-850-9157	7-19	P904
5910-636-4271	7-9A	C117	5935-850-9157	7-19	P905
5910-643-8966		C503	5935-850-9157	7-19	P906
5910-643-8966		C510	5935-921-5609	7-19	P901
			5935-921-5609	7-19	P907
5910-666-7941	7-11	C114	5950-645-2526		L501
			5950-645-2526		L502
			5950-645-2528		L503
			5905-645-2529		L504
			5950-645-2529		L505
5910-667-5560	7-11	C107	5950-645-5554	7-9B	T601
5910-667-7307	7-15	C801	5950-645-6023	7-9B	L801
			5950-646-1373	7-16	L201
			5950-646-1373	7-18	L701

SECTION IV

TM 11-6625-540-40P

STOCK NUMBER	FIGURE NO.	ITEM NO.	STOCK NUMBER	FIGURE NO.	ITEM NO.
5950-646-1373	7-18	L702	5960-543-0219	7-15	V104
5950-646-3899		T801	5960-543-0219	7-15	V105
5950-647-9581	7-98	L102	5960-543-0219	7-9C	V402
			5960-549-0017		
5960-134-6031	7-17	V101	5960-583-4110	7-13	V301
5960-134-6031	7-9C	V102	5960-583-4110	7-23	V901
5960-134-6031	7-4C	V103			
5960-179-3710	7-13	V504			
5961-179-3710	7-13	V506	5960-646-1374	7-14	L105
5960-179-3710	7-13	V507	5960-860-7710		
5960-179-4446		V701			
5960-179-4446		V702			
5960-179-4446	7-13	V203	6145-161-0913		
5960-179-4446	7-13	V501	6145-284-0579		
5960-179-4446	7-13	V502			
5960-179-4446	7-9C	V401	6240-300-6897	7-19	I802
5960-188-8612	7-13	V801	6240-567-2503	7-12	E501
5960-262-0210	7-13	V503	6240-567-2503	7-12	E502
5960-262-0210	7-13	V505	6240-567-2503	7-15	E202
5960-262-0210	7-9C	V601	6240-567-2503	7-16	E2C1
5960-262-0286	7-13	V202	6250-500-3973		
5960-270-5511	S-2	V201	6625-091-9514	7-14	Z901
5960-271-1396			6625-309-2747	7-23	O202
5960-272-9182	7-13	V802	6625-503-0663		
5960-272-9182	7-13	V803			
			6625-649-1917	7-25	Z903
			6625-706-0797	7-24	Z902

REFERENCE NO.	MFR CODE	FIG. NO.	ITEM NO.	REFERENCE NO.	MFR CODE	FIG. NO.	ITEM NO.
CA4R1	77221	7-18	R704	DC1-2	09250	7-11	R101
CA4R1	77221	7-18	R710	DC1-2	77221	7-11	R106
CC20CH070C	81350	7-19	C921	DC1-2A	09250		R535
CE42C3500	81350	7-98	C802	DC1-2A	80058		R537
CH1510J	81350	7-16	C206	DC1-4	09250	7-10	R111
CM158050M	81350	7-19	C106	DC1-4	09250	7-11	R107
CM158050M	81350	7-19	C701	DC1-4	09250	7-11	R108
CM158431J	81350	7-11	C110	DC1-4	09250	7-11	R110
CM158471J	81350		C505	DC1-4	09250	7-18	R701
CM150241J	81350	7-11	C109	DC1-4	09250	7-18	R702
CM150510J	81350	7-16	C204	DC1-4	09250	7-18	R703
CM150510J	81350	7-98	C122	DC1-4	09250	7-18	R704
CM150820J	81350	7-11	C108	DC1-4	09250	7-18	R705
CM150820J	81350	7-98	C123	DC1-4	09250	7-18	R706
CM208271K	81350		C711	DC1-4	09250	7-18	R707
CM208100K	81350		C507	DC1-4	09250	7-18	R708
CM208150K	80058		C713	DC1-4	09250	7-19	R109
CM200560K	81350	7-19	C512	DC1-4	09250	7-19	R902
CM200821J	81350	7-19	C903	DC1-4	09250	7-25	R901
CM200821J	81350	7-19	C513	DC1-4	09250	7-9A	R302
C003MGF3-18-0330	81349			DC1-4	09250	7-9A	R303
CP04A3KC683K	81350	7-98	C301	DC1-4	09250	7-9A	R305
CU11A120	81350	7-19	C702	DC1-4	09250	7-9A	R306
CU11C300	81350	7-2	C517	F02G2R00A	81349	7-19	F801
CU11C300	81350	7-3	C704	F02G2R00A	81349	7-19	F802
CU11C300	81350	7-98	C117	GC45	80058	7-19	R601
C2-90	80058	7-9A	R115	HT90	80058		R529
DA0048-003A	71590		C916	HT90	80058	7-13	R510
DA048-003A	71590		C508	HT90	80058	7-9A	R402
DA048-003A	71590		C509	IN70	81350	7-19	
DA048-003A	71590		C522	M36	53021	7-25	C901
DA048-003A	71590		C712	M5P	81312	7-19	P901
DA048-003A	71590		C715	M5P	81312	7-19	P907
DA048-003A	71590	7-13	C519	M5S	81312	7-5C	J103
DA048-003A	71590	7-14	C121	P1232NG	80058	7-98	C401
DA048-003A	71590	7-14	C247	P1232NG	80058	7-98	C803
DA048-003A	71590	7-17	C601	P1232NGP	80058		C502
DA048-003A	71590	7-19	C208	P1232NGP	80058		C504
DA048-003A	71590	7-19	C716	P1232NGP	80058		C714
DA048-003A	71590	7-19	C717	P1232NGP	80058	7-15	C205
DA048-003A	71590	7-98	C403	P1232NGP	80058	7-98	C116
DA048-003A	71590	7-98	C404	P1232NGP	80058	7-98	C118
DA048-003A	71590	7-98	C603	P1232NGP	80058	7-98	C119
DC1	09250	7-19	R908	P1232NGP	80058	7-98	C402
DC1	09250	7-24	R909	P1232NGP	80058		C518

REFERENCE NO.	MFR CODE	FIG. NO.	ITEM NO.	REFERENCE NO.	MFR CODE	FIG. NO.	ITEM NO.
RCM152100J	80058		C520	RC20GF334J	81350		R53
RCM152100J	80058	7-11	C113	RC20GF335K	81350	7-19	R50
RC208F475J	81350	7-19	R112	RC20GF335K	81350	7-9A	R30
RC208F475J	81350	7-19	R905	RC20GF394K	81350	7-9A	R40
RC20GF100K	81350	7-9A	R602	RC20GF432J	81350	7-9A	R12
RC20GF101K	81350	7-14	R144	RC20GF470J	81350	7-9A	R12
RC20GF101K	81350	7-19	R145	RC20GF470J	81350	7-9A	R12
RC20GF102K	81350	7-19	R507	RC20GF470J	61350	7-9A	R14
RC20GF102K	81350	7-19	R722	RC20GF471K	81350		R72
RC20GF103K	81350	7-16	R221	RC20GF472K	81350	7-14	R14
RC20GF103K	81350	7-19	R211	RC20GF472K	81350	7-9A	R14
RC20GF103K	81350	7-9A	R806	RC20GF472K	81350	7-9A	R60
RC20GF104J	81350	7-19	R547	RC20GF474K	80058		R30
RC20GF104K	81350		R511	RC20GF475K	81350	7-15	R14
RC20GF104K	81350		R526	RC20GF514J	81350		R51
RC20GF104K	81350		R536	RC20GF561K	81350		R52
RC20GF104K	81350		R719	RC20GF562K	81350		R50
RC20GF104K	81350	7-16	R218	RC20GF562K	81350	7-9A	R14
RC20GF104K	81350	7-9A	R807	RC20GF564K	81350	7-9A	R12
RC20GF105J	81350		R518	RC20GF564K	81350	7-9A	R12
RC20GF105J	81350	7-16	R217	RC20GF564K	81350	7-9A	R40
RC20GF105J	81350	7-9A	R304	RC20GF682K	81350	7-9A	R14
RC20GF105K	81350		R715	RC20GF685J	81350		R51
RC20GF106K	81350	7-19	R143	RC20GF821J	81350	7-9A	R11
RC20GF115J	81350		R718	RC20GF821K	81350		R50
RC20GF122J	81350	7-19	R712	RC20GF823K	81350	7-9A	R20
RC20GF122J	81350	7-19	R726	RC20GF823K	81350	7-9A	R20
RC20GF122J	81350	7-9A	R128	RC20GF823K	81350	7-9A	R20
RC20GF122J	81350	7-9A	R129	RC20GF823K	81350	7-9A	R20
RC20GF123K	81350		R716	RC20GF85J	81350	7-12	R52
RC20GF123K	81350		R720	RC20GF912J	81350	7-9A	R60
RC20GF123K	81350	7-18	R711	RC20GF914J	81350	7-16	R21
RC20GF124K	81350		R721	RC290GF823K	81350		R20
RC20GF125J	81350		R717	RC32GF333K	81350	7-15	R80
RC20GF125K	81350		R504	RC32GF103K	81350		R51
RC20GF125K	81350		R508	RC32GF104K	81350	7-13	R20
RC20GF125K	81350		R522	RC32GF152K	81350		R54
RC20GF125K	81350	7-19	R119	RC32GF153K	81350	7-19	R52
RC20GF125K	81350	7-9A	R116	RC32GF183K	81350		R52
RC20GF152K	81350		R532	RC32GF333K	81350	7-15	R80
RC20GF154J	81350		R538	RC32GF472K	81350		R52
RC20GF154K	81350	7-16	R213	RC42GF113J	81350		R54
RC20GF155J	81350	7-16	R215	RC42GF113J	81350		R54
RC20GF155J	81350	7-19	R546	RC42GF183K	81350		R54
RC20GF161J	81350	7-19	R113	RC42GF202J	81350	7-14	R13
RC20GF161J	81350	7-19	R906	RC42GF202J	81350	7-14	R13
RC20GF165J	81350	7-9A	R409	RC42GF202J	81350	7-14	R13
RC20GF181J	81350	7-9A	R117	RC42GF202J	81350	7-14	R13
RC20GF181K	81350		R506	RC42GF202J	81350	7-14	R13
RC20GF182J	81350	7-9A	R122	RC42GF202J	81350	7-14	R13
RC20GF183J	81350	7-9A	R404	RC42GF202J	81350	7-14	R13
RC20GF183J	81350	7-9A	R407	RC42GF202J	81350	7-14	R13
RC20GF183K	81350		R540	RC42GF223K	81350		R54
RC20GF183K	81350	7-19	R539	RC42GF245J	81349		R71
RC20GF185J	81350		R517	RC42GF272K	81350		R51
RC20GF185J	81350		R714	RC42GF473K	81350	7-10	R14
RC20GF185J	81350	7-9A	R408	REC115	80058	7-25	C90
RC20GF202J	81350	7-9A	R124	REC115A	80058		C50
RC20GF220K	81350	7-19	R803	RG62AU	80058		
RC20GF221J	81350	7-19	R725	RV2MAY58105AMIL	81349	7-17	R80
RC20GF221K	81350		R509	RW31G45	81349	7-19	R80
RC20GF221K	81350	7-19	R603	KW31G45	81350		R80
RC20GF223K	81350	7-16	R214	DT23N	81350		S80
RC20GF224K	81350	7-25	R903	TS102P01	81350		
RC20GF225K	81350	7-9A	R405	TS102P01	81350	7-6	
RC20GF225K	81350	7-9A	R406	TS102P01	81350	7-8	
RC20GF241J	81350	7-19	R907	TS102P01	81350	7-17	
RC20GF241J	81350	7-9A	R114	TS102P01	81350	7-9C	
RC20GF271J	81350	7-9A	R120	TS103P01	81350		
RC20GF271K	81350	7-9A	R605	TS103P01	81350	7-7	
RC20GF272K	81350		R533	TS103P01	81350	7-8	
RC20GF273K	81350	7-16	R212	TS103P01	81350	7-9C	
RC20GF274K	81350		R521	TS103U02	12992		
RC20GF275K	81350	7-16	R219	UG260U	81350	7-19	P90
RC20GF275K	81350	7-16	R220	UG260U	81350	7-19	P90
RC20GF275K	81350	7-19	R527	UG260U	81350	7-19	P90
RC20GF301J	81350	7-19	R910	UG260U	81350	7-19	P90
RC20GF301J	81350	7-19	R911	UG260U	81350	7-19	P90
RC20GF301J	81350	7-19	R912	UG625U	81350	7-19	J30
RC20GF301J	81350	7-19	R913	UG625U	81350	7-19	J50

REFERENCE NO.	MFR CODE	FIG. NO.	ITEM NO.	REFERENCE NO.	MFR CODE	FIG. NO.	ITEM NO.
G625U	81350	7-19	J601	21009421	80058		L503
G625U	81350	7-19	J701	21009431	80058		L504
G625U	81350	7-19	J901	21009431	80058		L505
G625U	81350	7-19	J902	26-182	02660	7-12	P803
G625U	81350	7-9C	J101	27007141	80058		
G625U	81350	7-9C	J102	29156289	86P82	7-18	C514
0PI21M	81349			3WP1	80058	5-2	V201
073818	77748			34003800	80058	7-15	
073819	77748			4100751	80058		H208
TS8105AMIL81349	RV24A		R724	4100751	80058		H21C
01064600	80058	7-19	R534	45004681	80058		O203
02220811	80058			45005631	80058		A101
03130721	80058	7-15	C801	45005661	80058		A104
03137761	80058	7-24	C904	45005662	80058		A102
03137781	92294	7-23	C903	45005663	80058		A501
03157711	80058	7-10	C101	458253	80058		
05005722	80058	7-19	S101	452MINI-2	74096		
05005732	80058		S701	462MINI-2	01009	7-19	J802
05005745	80058	7-19	S901	462MINI-2	02660	7-13	J803
05005754	80058		S902	48003851	01009	7-17	P802
05005801	80058	7-15	S102	5XAXC10HM	80058		O202
09035031	80058	7-19	E901	5XAX10HM	80058	7-14	R139
09035031	80058	7-19	E902	50093051	80058	7-14	R130
1N70	81350			50093061	80058	7-25	Z903
1SM1	91929	7-9C	S103	50093111	80058	7-24	Z902
1Z2	81349	7-13	V801	5651WA	80058	7-23	Z901
10	80058	7-9C	E101	5654-6AK5W	80058	7-13	V202
11957	71785			5654-6AK5W	80058	7-17	V101
12AT7WA	80058		V701	5654-6AKSW	80058	7-9C	V102
12AT7WA	80058		V702	5702WA	80058	7-9C	V103
12AT7WA	80058	7-13	V203	5726-6AL5W	80058	7-23	V901
12AT7WA	80058	7-13	V502	5814A	80058	7-13	V301
12AT7WA	80058	7-9C	V401	5814A	80058	7-13	V503
12A7WA	80058	7-13	V901	5814A	80058	7-13	V505
12007161	80058	7-12	E901	6AN5WA	80058	7-9C	V601
12007161	80058	7-12	E902	6AN5WA	81350	7-15	V104
12007161	80058	7-15	E202	6AN5WA	81350	7-15	V105
12007161	80058	7-16	E201	6AU6WA	81350	7-9C	V402
12018778	03135		C503	6AU6WA	80058	7-13	V504
12018778	03135		C510	6AU6WA	80058	7-13	V506
136	60572	7-11	C107	6X4W	80058	7-13	V507
136	60572	7-11	C112	6X4W	80058	7-13	V802
136	60572	7-11	C114	605	80058	7-13	V803
14700	71785	7-8		605	80058	7-18	C705
156289	Y4621	7-13	C201	65	80058	7-18	C707
156289	Y4621	7-13	C202	73817	80058	7-19	R502
156289	Y4621	7-16	C203	8290	77748		
186P8229651	22222	7-98	C602	8292	00629	7-8	
20007101	80058		T801	86-86P47306S1	00629		
20007112	80058	7-98	T401	86-86P47306S1	80058	7-19	C302
21007861	80058	7-98	L102	86-86P47306S1	80058	7-19	C501
21007871	80058	7-98	L101	86-86P47306S1	80058	7-98	C115
21007891	80058	7-98	L103	86LAP	80058	7-98	C120
21009311	80058	7-98	L801	86LAR	01009	7-19	I802
21009321	80058	7-16	L201	86L8MA	01009	7-19	I801
21009321	80058	7-16	L701	86P82391S1	56289		
21009321	80058	7-18	L702	88000803	80058	7-19	C515
21009331	80058	7-23	L901	88000824	80058	7-19	Z801
21009381	80058	7-14	L105	90	80058	7-14	
21009401	80058	7-14	L108	90	80058		R208
21009401	80058	7-98	L107	90	80058		R210
21009411	80058		L501	90LAPW907-22	80058	7-13	R530
21009411	80058		L502		01009		

By Order of the Secretary of the Army:

**FRED C. WEYAND**  
*General, United States Army*  
*Chief of Staff*

Official:

**VERNE L. BOWERS**  
*Major General, United States Army*  
*The Adjutant General*

Distribution:

*Active Army:*

USASA (2)  
 CNGB (1)  
 ACSC-E (2)  
 Dir of Trans (1)  
 COE (1)  
 TSG (1)  
 USAARENBD (1)  
 AMC (1)  
 MICOM (2)  
 TECOM (2)  
 HISA (Ft Monmouth) (43)  
 USACC (4)  
 TRADOC (2)  
 ARADCOM (2)  
 ARADCOM Rgn (2)  
 OS Maj Comd (4)  
 LOGCOMD (3)  
 MDW (1)  
 Armies (2)  
 Corps (2)  
 Ft Gordon (10)  
 Ft Huachuca (10)  
 Ft Carson (5)  
 WSMR (1)  
 Svc Colleges (1)  
 USASESS (5)  
 USAINTCS (3)

USAADS (2)  
 USAFAS (2)  
 USAARMS (2)  
 USAIS (2)  
 USAES (2)  
 AD (1) except  
     SAAD (30)  
     LBAD (14)  
     TOAD (14)  
     ATAD (10)  
 USA Dep (2)  
 Sig Sec USA Dep (2)  
 Sig Dep (2)  
 ATS (1)  
 MAAG (1)  
 WRAMC (1)  
 USARMIS (1)  
 USAERDAA (1)  
 USAERDAW (1)  
 Sig FLDMS (1)  
 Ft Richardson (ECOM Ofc) (2)  
 Units org under fol TOE (1 ea.):  
     11-97  
     11-98  
     11-500 (AA-AC)  
     29-134  
     29-136

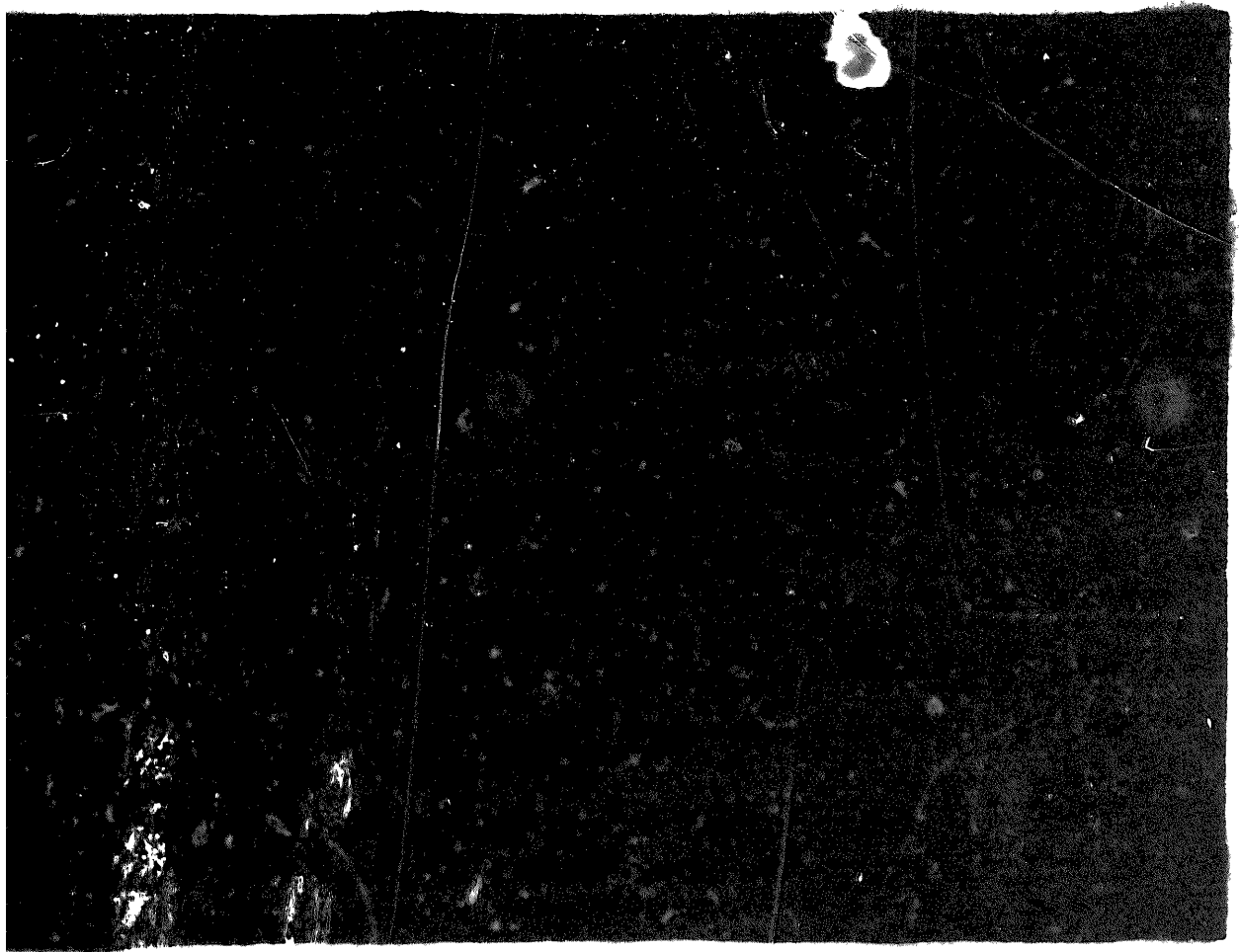
**ARNG:** State AG (3); units—same as active Army.  
**USAR:** None.  
 For explanation of abbreviations used, see AR 810-50.

**END**

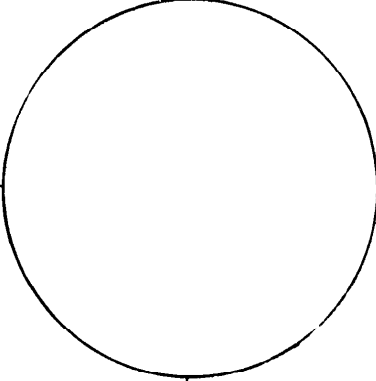
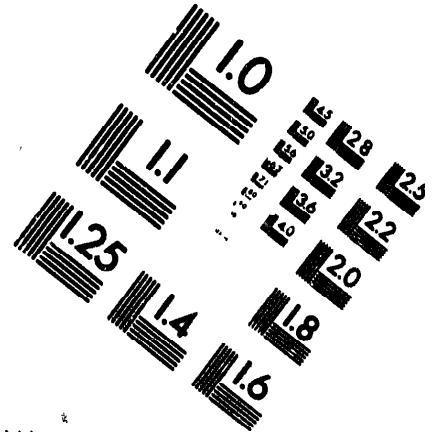
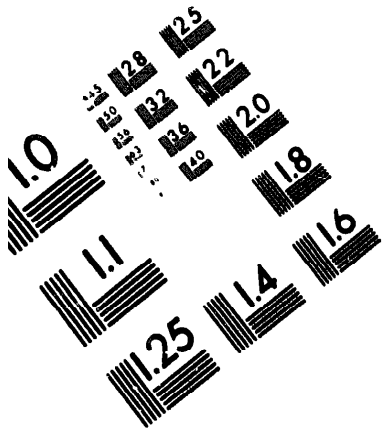
8-1-83

**DATE**





DEPARTMENT OF THE ARMY  
MICROFORM  
TEST TARGET



150 MM

1.0 mm (e= 81 mm)

ABCDEFGHIJKLMNQRSTUUVWXYZ1234567890  
abcdefghijklmnopqrstuvwxyz\$%&/'%# 1/2 1/4 3/4 —=+ x&@\*

1.5 mm (e= 1.09 mm)

ABCDEFGHIJKLMNQRSTUUVWXYZ1234567890  
abcdefghijklmnopqrstuvwxyz\$%&/'%# 1/2 1/4 3/4 —=+ x&@\*

2.0 mm (e= 1.37 mm)

ABCDEFGHIJKLMNQRSTUUVWXYZ  
abcdefghijklmnopqrstuvwxyz  
1234567890\$%&/'%# 1/2 1/4 3/4 —=+ x&@\*

2.5 mm (e= 1.77 mm)

ABCDEFGHIJKLMNQRSTUUVWXYZ  
abcdefghijklmnopqrstuvwxyz  
1234567890\$%&/'%# 1/2 1/4 3/4 —=+ x&@\*

1.0 mm (e= 81 mm)

ABCDEFGHIJKLMNQRSTUUVWXYZ1234567890  
abcdefghijklmnopqrstuvwxyz\$%&/'%# 1/2 1/4 3/4 —=+ x&@\*

1.5 mm (e= 1.09 mm)

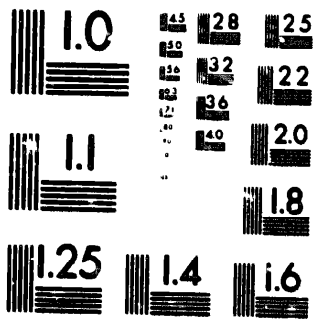
ABCDEFGHIJKLMNQRSTUUVWXYZ1234567890  
abcdefghijklmnopqrstuvwxyz\$%&/'%# 1/2 1/4 3/4 —=+ x&@\*

2.0 mm (e= 1.37 mm)

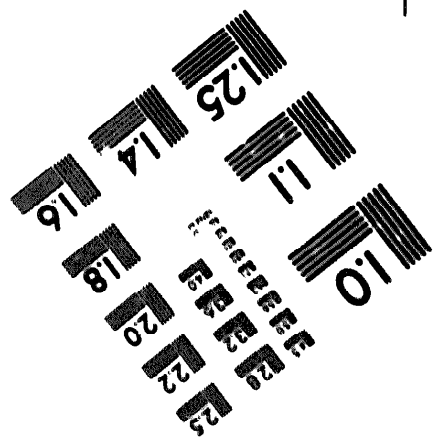
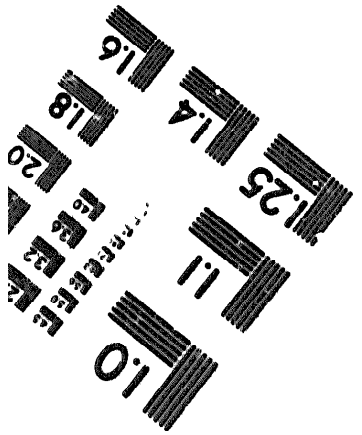
ABCDEFGHIJKLMNQRSTUUVWXYZ  
abcdefghijklmnopqrstuvwxyz  
1234567890\$%&/'%# 1/2 1/4 3/4 —=+ x&@\*

2.5 mm (e= 1.77 mm)

ABCDEFGHIJKLMNQRSTUUVWXYZ  
abcdefghijklmnopqrstuvwxyz  
1234567890\$%&/'%# 1/2 1/4 3/4 —=+ x&@\*



200 MM



250 MM